

上海川土微电子股份有限公司

选型手册

CHIPANALOG PRODUCTS SELECTION

The logo for CHIPANALOG, featuring the word "CHIPANALOG" in a bold, white, sans-serif font. Above the letters "A" and "L" is a white, curved swoosh that arches over the text.

CHIPANALOG

川土微电子



CHIPANALOG PRODUCTS SELECTION

关于我们

About Us

多品类模拟和数模混合芯片供应商

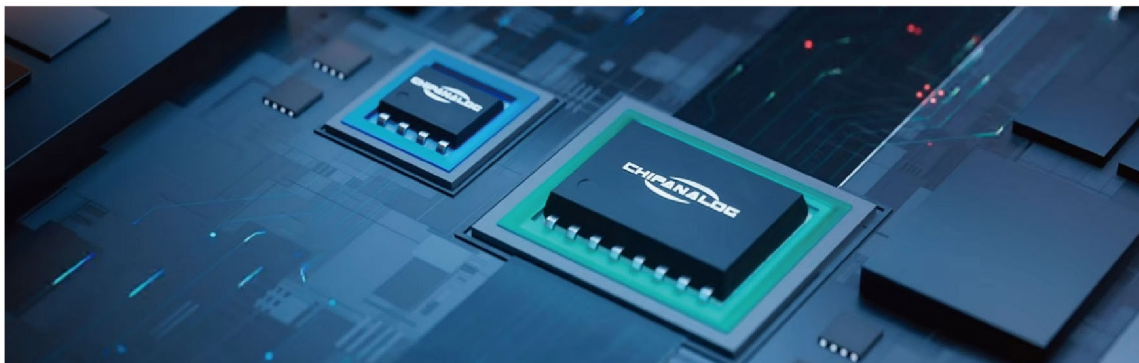
Comprehensive Analog and Mixed-Signal IC Solutions Provider

电力电子应用方案创新主体

Dedicated to Innovation in Power Electronics Applications

隔离与接口芯片市场领航者

Innovation Leader in Isolation & Interface Technology



研发销售布局

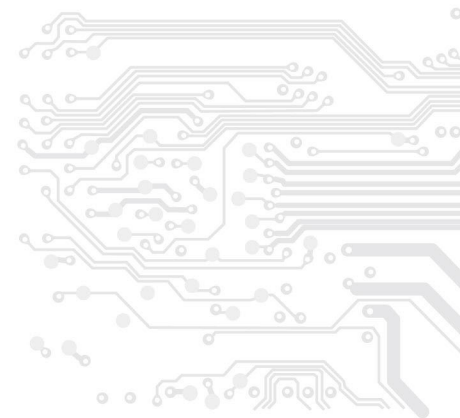
R&D & Sales Network

上海/北京/深圳

Shanghai (HQ), Beijing, Shenzhen

南京/苏州/杭州

Nanjing, Suzhou, Hangzhou





产品矩阵

PRODUCT MATRIX

隔离与接口

ISOLATION AND INTERFACE

- 数字隔离
Digital Isolation
- 隔离接口
Isolated Interface
- 接口
Interface

高性能模拟

HIGH PERFORMANCE ANALOG PRODUCTS

- 传感与采样
Sensor & Sampling
- 高精度信号链
High Precision Signal Chain
- 高速信号链
High-speed Signal Chain

驱动与电源

DRIVER AND POWER

- 隔离驱动
Isolated Gate Driver
- 电源管理
Power Management
- 驱动与开关
Driver & Switch



产品发布历程

Product Release History

- 推出首批数字隔离器系列CA-IS37XX、CA-IS38XX
Launched the company's first digital isolator families, CA-IS37XX and CA-IS38XX

2017-2019

- 推出SBC系列 CA-IF1028-Q1
Launched the System Basis Chip (SBC) family with CA-IF1028-Q1
- 推出首款隔离驱动器 CA-IS3211VCJ
Introduced the first isolated gate driver, CA-IS3211VCJ

2022



2016

川土微电子成立
2016 Chipanalog Founded



2020-2021

- 推出集成隔离电源的隔离器、隔离接口系列CA-IS36XX、CA-IS306X、CA-IS309X
Introduced isolators with integrated isolated power and isolated interface families, CA-IS36XX, CA-IS306X, and CA-IS309X
- 推出首款车用CAN/LIN接口收发器CA-IF1042-Q1、CA-IF1021-Q1
Unveiled the first Automotive-grade CAN/LIN interface transceivers, CA-IF1042-Q1 and CA-IF1021-Q1





- 推出1.5W全集成隔离 DC-DC 转换器CA-IS3115
Rolled out the 1.5W fully integrated isolated DC-DC converter, CA-IS3115
- 推出首款车用主驱芯片CA-IS3215/3216-Q1
Unveiled the first Automotive-grade isolation drivers for main traction inverters, CA-IS3215/3216-Q1

2023



- 推出功能安全ASIL-B(D)隔离驱动CA-IS3266/3265-Q1
Launching functional safety ASIL B(D) compliant isolated drivers, CA-IS3266/3265-Q1
- 推出10A大电流、带ADC和保护的单通道智能隔离驱动器 CA-IS3217-Q1
Introducing a high-current, 10A single-channel smart isolated driver with integrated ADC and protection, CA-IS3217-Q1
- 推出数字光耦系列 CA-IS242X
Debuting the digital optocoupler family, CA-IS242X

2025



2024



- 推出首款高性能霍尔效应电流传感器 CA-IS23050W
Launched the first high-performance Hall-effect current sensor, CA-IS23050W
- 推出支持功能安全ASIL-B的CAN收发器 CA-IF1169-Q1
Introduced the CAN transceiver supporting functional safety up to ASIL B, CA-IF1169-Q1
- 推出HomeBus收发器 CA-IF42088
Rolled out the HomeBus transceiver, CA-IF42088



关于川土微电子 ABOUT CHIPANALOG

上海川土微电子股份有限公司是专注高端模拟芯片研发设计与销售的高科技公司，产品涵盖隔离与接口、高性能模拟、驱动与电源三大产品线以及 μ MiC 战略产品（micro-Module in Chip）。目前产品已广泛应用于工业控制、电源能源、通讯与计算、汽车电子等领域。

成立于 2016 年的川土微电子，历经多年蓬勃发展，已然成为隔离、接口等高端模拟芯片领域的知名供应商，合作客户累计超过 5000 家。秉承“客户至上、志存高远、持续创新、完美极致、诚实守信”的价值观，川土微电子将不忘初心、砥砺前行，为全世界的客户提供多品类、高品质的模拟芯片。

Shanghai Chipalog Microelectronics Co., Ltd. is a high-tech enterprise specializing in the R&D, design, and sales of high-end analog chips. Our comprehensive product portfolio encompasses isolation and interface, high-performance analog devices, driver and power, and strategic μ MiC (micro-Module in Chip) products. Currently, our offerings are widely utilized across various industries, including industrial control, power supply and energy, communications and computing, automotive electronics, and more.

Since its inception in 2016, Chipalog Microelectronics has flourished and solidified its position as a reputable supplier in the high-end analog chip sector. With over 5,000 cooperative clients, we have built a strong foundation. Looking ahead, Chipalog Microelectronics remains steadfast to its original aspiration and continues to forge ahead, committed to providing a diverse range of high-quality analog chips to customers worldwide.





μMiC系列产品

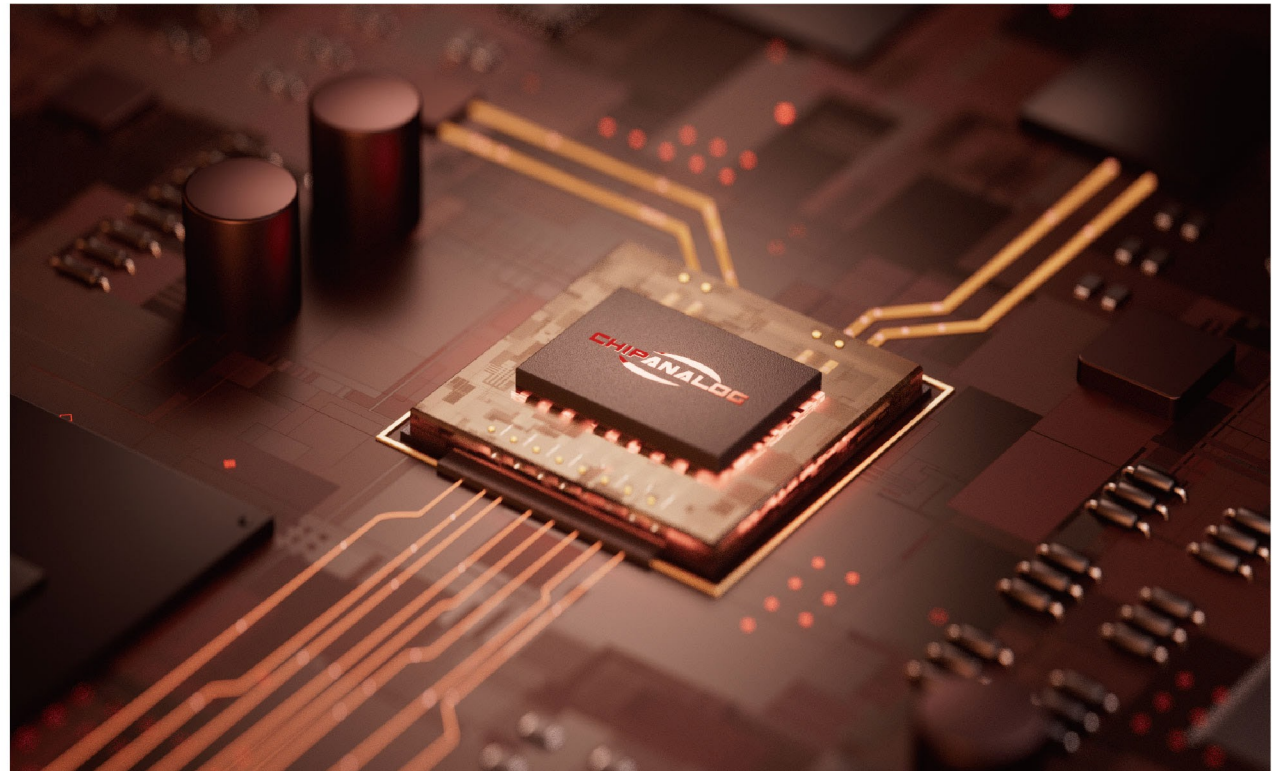
μMiC PRODUCTS

μMiC产品定义与介绍

About μMiC Products

μMiC产品系列融合了高端芯片设计、先进封装、系统集成等领先技术，呈现给客户方案级模组级、系统级的芯片。致力于帮助客户增加设计差异化、降低成本、缩小体积、降低设计难度、保障供应链安全、简化元器件供应链。

μMiC is a series of Chipanalog micro-module in chip products. These featured products integrate high-performance IC design, advanced packaging technologies and system level integration within a single module, offer a complete system-level solution for the end customers. Our μMiC@ technology is committed to providing differentiated design and helping customer dramatically reduce system design complexity, size and total cost. Also, high integration simplifies the components supply-chain and ensures the safety of the supply chain.





CATALOG

目录

01 隔离与接口 Isolation and Interface

数字隔离 Digital Isolation	08
隔离接口 Isolated Interface	21
接口 Interface	26

02 高性能模拟 High Performance Analog Products

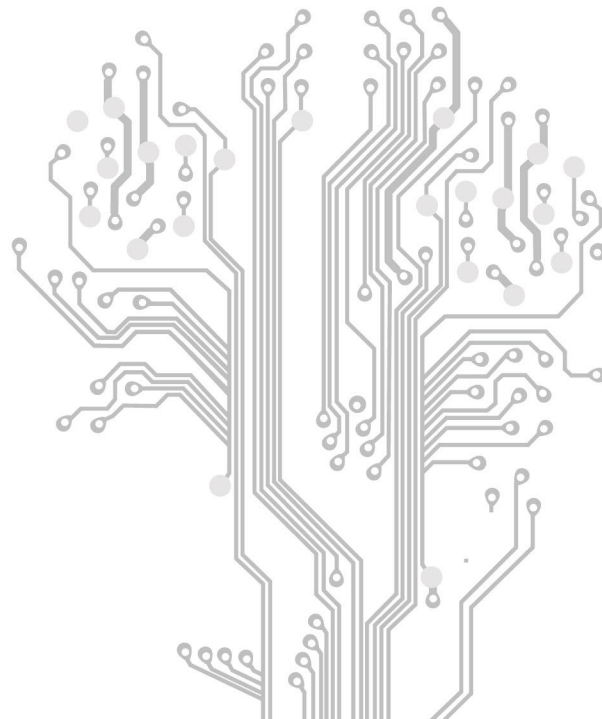
传感与采样 Sensor & Sampling	34
高精度信号链 High-speed Signal Chain	37

03 驱动与电源 Driver and Power

隔离驱动 Isolated Gate Driver	39
电源管理 Power Management	45
驱动与开关 Driver & Switch	48

DIGITAL ISOLATION

数字隔离





川土微电子选型表-带隔离电源数字隔离器 (μMIC产品) Chipanalog Products Selection_Digital Isolators with Iso-power

Part number	With iso-power?	Number of channels	Number of reversed channels	Isolation rating (Vrms)	CMTI (kV/μs)	Surge rating (kVpk)	ESD rating HBM(kV)	Data rate (bps)	Operating voltage range (V)	Operating current per channel @ 1Mbps (mA,typ)	Output mode	Default output	Temperature range (°C)	Package
CA-IS3620LW	Yes	2	0	5000	150	10	6	DC-100M	3-5.5	1.5	Push-pull	Low	-40~125	SOIC16-WB(W)
CA-IS3621LW	Yes	2	1	5000	150	10	6	DC-100M	3-5.5	1.5	Push-pull	Low	-40~125	SOIC16-WB(W)
CA-IS3621LVW	Yes	2	1	5000	150	10	6	DC-100M	3-5.5	1.5	Push-pull	Low	-40~125	SOIC16-WB(W)
CA-IS3640HW	Yes	4	0	5000	150	10	6	DC-100M	3-5.5	1.5	Push-pull	High	-40~125	SOIC16-WB(W)
CA-IS3641HW	Yes	4	1	5000	150	10	6	DC-100M	3-5.5	1.5	Push-pull	High	-40~125	SOIC16-WB(W)
CA-IS3642HW	Yes	4	2	5000	150	10	6	DC-100M	3-5.5	1.5	Push-pull	High	-40~125	SOIC16-WB(W)
CA-IS3643HW	Yes	4	3	5000	150	10	6	DC-100M	3-5.5	1.5	Push-pull	High	-40~125	SOIC16-WB(W)
CA-IS3644HW	Yes	4	4	5000	150	10	6	DC-100M	3-5.5	1.5	Push-pull	High	-40~125	SOIC16-WB(W)
CA-IS3640LW	Yes	4	0	5000	150	10	6	DC-100M	3-5.5	1.5	Push-pull	Low	-40~125	SOIC16-WB(W)
CA-IS3641LW	Yes	4	1	5000	150	10	6	DC-100M	3-5.5	1.5	Push-pull	Low	-40~125	SOIC16-WB(W)
CA-IS3642LW	Yes	4	2	5000	150	10	6	DC-100M	3-5.5	1.5	Push-pull	Low	-40~125	SOIC16-WB(W)
CA-IS3643LW	Yes	4	3	5000	150	10	6	DC-100M	3-5.5	1.5	Push-pull	Low	-40~125	SOIC16-WB(W)
CA-IS3644LW	Yes	4	4	5000	150	10	6	DC-100M	3-5.5	1.5	Push-pull	Low	-40~125	SOIC16-WB(W)
CA-IS3640HVW	Yes	4	0	5000	150	10	6	DC-100M	3-5.5	1.5	Push-pull	High	-40~125	SOIC16-WB(W)
CA-IS3641HVW	Yes	4	1	5000	150	10	6	DC-100M	3-5.5	1.5	Push-pull	High	-40~125	SOIC16-WB(W)
CA-IS3642HVW	Yes	4	2	5000	150	10	6	DC-100M	3-5.5	1.5	Push-pull	High	-40~125	SOIC16-WB(W)
CA-IS3643HVW	Yes	4	3	5000	150	10	6	DC-100M	3-5.5	1.5	Push-pull	High	-40~125	SOIC16-WB(W)
CA-IS3644HVW	Yes	4	4	5000	150	10	6	DC-100M	3-5.5	1.5	Push-pull	High	-40~125	SOIC16-WB(W)
CA-IS3640LVW	Yes	4	0	5000	150	10	6	DC-100M	3-5.5	1.5	Push-pull	Low	-40~125	SOIC16-WB(W)
CA-IS3641LVW	Yes	4	1	5000	150	10	6	DC-100M	3-5.5	1.5	Push-pull	Low	-40~125	SOIC16-WB(W)



川土微电子选型表-带隔离电源数字隔离器 (μMIC产品) Chipanalog Products Selection_Digital Isolators with Iso-power

Part number	With iso-power?	Number of channels	Number of reversed channels	Isolation rating (Vrms)	CMTI (kV/μs)	Surge rating (kVpk)	ESD rating HBM(kV)	Data rate (bps)	Operating voltage range (V)	Operating current per channel @ 1Mbps (mA,typ)	Output mode	Default output	Temperature range (°C)	Package
CA-IS3642LVW	Yes	4	2	5000	150	10	6	DC-100M	3-5.5	1.5	Push-pull	Low	-40~125	SOIC16-WB(W)
CA-IS3643LVW	Yes	4	3	5000	150	10	6	DC-100M	3-5.5	1.5	Push-pull	Low	-40~125	SOIC16-WB(W)
CA-IS3644LVW	Yes	4	4	5000	150	10	6	DC-100M	3-5.5	1.5	Push-pull	Low	-40~125	SOIC16-WB(W)

川土微电子选型表-带隔离电源的超小型数字隔离器 (μMIC产品) Chipanalog Products Selection_Ultra-small Digital Isolators with Iso-power

Part number	With iso-power?	Number of channels	Number of reversed channels	Isolation rating (Vrms)	CMTI (kV/μs)	Surge rating (kVpk)	ESD rating HBM(kV)	Data rate (bps)	Operating voltage range (V)	Operating current per channel @ 1Mbps (mA,typ)	Output mode	Default output	Temperature range (°C)	Package
CA-IS2631HA	Yes	3	1	2500	50	8	4	DC-50M	3-5.5	1.5	Push-pull	High/Low	-40~125	LGA(4.65mmx5.2mm)

川土微电子选型表-标准数字隔离器 Chipanalog Products Selection_Standard Digital Isolators

Part number	With iso-power?	Number of channels	Number of reversed channels	Isolation rating (Vrms)	CMTI (kV/μs)	Surge rating (kVpk)	ESD rating HBM(kV)	Data rate (bps)	Operating voltage range (V)	Operating current per channel @ 1Mbps (mA,typ)	Output mode	Default output	Temperature range (°C)	Package
CA-IS3720HS	No	2	0	3750	150	8	6	DC-150M	2.5-5.5	1.5	Push-pull	High	-40~125	SOIC8(S)
CA-IS3721HS	No	2	1	3750	150	8	6	DC-150M	2.5-5.5	1.5	Push-pull	High	-40~125	SOIC8(S)



川土微电子选型表_标准数字隔离器
Chipanalog Products Selection_Standard Digital Isolators

Part number	With iso-power?	Number of channels	Number of reversed channels	Isolation rating (Vrms)	CMTI (kV/ μ s)	Surge rating (kVpk)	ESD rating HBM(kV)	Data rate (bps)	Operating voltage range (V)	Operating current per channel @ 1Mbps (mA,typ)	Output mode	Default output	Temperature range (°C)	Package
CA-IS3722HS	No	2	1	3750	150	8	6	DC-150M	2.5-5.5	1.5	Push-pull	High	-40~125	SOIC8(S)
CA-IS3720LS	No	2	0	3750	150	8	6	DC-150M	2.5-5.5	1.5	Push-pull	Low	-40~125	SOIC8(S)
CA-IS3721LS	No	2	1	3750	150	8	6	DC-150M	2.5-5.5	1.5	Push-pull	Low	-40~125	SOIC8(S)
CA-IS3722LS	No	2	1	3750	150	8	6	DC-150M	2.5-5.5	1.5	Push-pull	Low	-40~125	SOIC8(S)
CA-IS3720HG	No	2	0	5000	150	10	6	DC-150M	2.5-5.5	1.5	Push-pull	High	-40~125	SOIC8-WB(G)
CA-IS3721HG	No	2	1	5000	150	10	6	DC-150M	2.5-5.5	1.5	Push-pull	High	-40~125	SOIC8-WB(G)
CA-IS3722HG	No	2	1	5000	150	10	6	DC-150M	2.5-5.5	1.5	Push-pull	High	-40~125	SOIC8-WB(G)
CA-IS3720LG	No	2	0	5000	150	10	6	DC-150M	2.5-5.5	1.5	Push-pull	Low	-40~125	SOIC8-WB(G)
CA-IS3721LG	No	2	1	5000	150	10	6	DC-150M	2.5-5.5	1.5	Push-pull	Low	-40~125	SOIC8-WB(G)
CA-IS3722LG	No	2	1	5000	150	10	6	DC-150M	2.5-5.5	1.5	Push-pull	Low	-40~125	SOIC8-WB(G)
CA-IS3720HW	No	2	0	5000	150	10	6	DC-150M	2.5-5.5	1.5	Push-pull	High	-40~125	SOIC16-WB(W)
CA-IS3721HW	No	2	1	5000	150	10	6	DC-150M	2.5-5.5	1.5	Push-pull	High	-40~125	SOIC16-WB(W)
CA-IS3722HW	No	2	1	5000	150	10	6	DC-150M	2.5-5.5	1.5	Push-pull	High	-40~125	SOIC16-WB(W)
CA-IS3720LW	No	2	0	5000	150	10	6	DC-150M	2.5-5.5	1.5	Push-pull	Low	-40~125	SOIC16-WB(W)
CA-IS3721LW	No	2	1	5000	150	10	6	DC-150M	2.5-5.5	1.5	Push-pull	Low	-40~125	SOIC16-WB(W)
CA-IS3722LW	No	2	1	5000	150	10	6	DC-150M	2.5-5.5	1.5	Push-pull	Low	-40~125	SOIC16-WB(W)
CA-IS3730HN	No	3	0	3750	150	8	6	DC-150M	2.5-5.5	1.5	Push-pull	High	-40~125	SOIC16-NB(N)
CA-IS3731HN	No	3	1	3750	150	8	6	DC-150M	2.5-5.5	1.5	Push-pull	High	-40~125	SOIC16-NB(N)
CA-IS3730LN	No	3	0	3750	150	8	6	DC-150M	2.5-5.5	1.5	Push-pull	Low	-40~125	SOIC16-NB(N)



川土微电子选型表-标准数字隔离器

Chipanalog Products Selection_Standard Digital Isolators

Part number	With iso-power?	Number of channels	Number of reversed channels	Isolation rating (Vrms)	CMTI (kV/ μ s)	Surge rating (kVpk)	ESD rating HBM(kV)	Data rate (bps)	Operating voltage range (V)	Operating current per channel @ 1Mbps (mA,typ)	Output mode	Default output	Temperature range (°C)	Package
CA-IS3731LN	No	3	1	3750	150	8	6	DC-150M	2.5-5.5	1.5	Push-pull	Low	-40~125	SOIC16-NB(N)
CA-IS3730HW	No	3	0	5000	150	10	6	DC-150M	2.5-5.5	1.5	Push-pull	High	-40~125	SOIC16-WB(W)
CA-IS3731HW	No	3	1	5000	150	10	6	DC-150M	2.5-5.5	1.5	Push-pull	High	-40~125	SOIC16-WB(W)
CA-IS3730LW	No	3	0	5000	150	10	6	DC-150M	2.5-5.5	1.5	Push-pull	Low	-40~125	SOIC16-WB(W)
CA-IS3731LW	No	3	1	5000	150	10	6	DC-150M	2.5-5.5	1.5	Push-pull	Low	-40~125	SOIC16-WB(W)
CA-IS3731HB	No	3	1	3750	150	8	6	DC-150M	2.5-5.5	1.5	Push-pull	High	-40~125	SSOP16(B)
CA-IS3731LB	No	3	1	3750	150	8	6	DC-150M	2.5-5.5	1.5	Push-pull	Low	-40~125	SSOP16(B)
CA-IS3740HN	No	4	0	3750	150	8	6	DC-150M	2.5-5.5	1.5	Push-pull	High	-40~125	SOIC16-NB(N)
CA-IS3741HN	No	4	1	3750	150	8	6	DC-150M	2.5-5.5	1.5	Push-pull	High	-40~125	SOIC16-NB(N)
CA-IS3742HN	No	4	2	3750	150	8	6	DC-150M	2.5-5.5	1.5	Push-pull	High	-40~125	SOIC16-NB(N)
CA-IS3740LN	No	4	0	3750	150	8	6	DC-150M	2.5-5.5	1.5	Push-pull	Low	-40~125	SOIC16-NB(N)
CA-IS3740VLN	No	4	0	3750	150	8	6	DC-150M	1.8-5.5	1.5	Push-pull	Low	-40~125	SOIC16-NB(N)
CA-IS3741LN	No	4	1	3750	150	8	6	DC-150M	2.5-5.5	1.5	Push-pull	Low	-40~125	SOIC16-NB(N)
CA-IS3742LN	No	4	2	3750	150	8	6	DC-150M	2.5-5.5	1.5	Push-pull	Low	-40~125	SOIC16-NB(N)
CA-IS3740HW	No	4	0	5000	150	10	6	DC-150M	2.5-5.5	1.5	Push-pull	High	-40~125	SOIC16-WB(W)
CA-IS3741HW	No	4	1	5000	150	10	6	DC-150M	2.5-5.5	1.5	Push-pull	High	-40~125	SOIC16-WB(W)
CA-IS3742HW	No	4	2	5000	150	10	6	DC-150M	2.5-5.5	1.5	Push-pull	High	-40~125	SOIC16-WB(W)
CA-IS3740LW	No	4	0	5000	150	10	6	DC-150M	2.5-5.5	1.5	Push-pull	Low	-40~125	SOIC16-WB(W)
CA-IS3741LW	No	4	1	5000	150	10	6	DC-150M	2.5-5.5	1.5	Push-pull	Low	-40~125	SOIC16-WB(W)



川土微电子选型表-标准数字隔离器

Chipanalog Products Selection_Standard Digital Isolators

Part number	With iso-power?	Number of channels	Number of reversed channels	Isolation rating (Vrms)	CMTI (kV/ μ s)	Surge rating (kVpk)	ESD rating HBM(kV)	Data rate (bps)	Operating voltage range (V)	Operating current per channel @ 1Mbps (mA,typ)	Output mode	Default output	Temperature range (°C)	Package
CA-IS3742LW	No	4	2	5000	150	10	6	DC-150M	2.5-5.5	1.5	Push-pull	Low	-40~125	SOIC16-WB(W)
CA-IS3740HB	No	4	0	3750	150	8	6	DC-150M	2.5-5.5	1.5	Push-pull	High	-40~125	SSOP16(B)
CA-IS3741HB	No	4	1	3750	150	8	6	DC-150M	2.5-5.5	1.5	Push-pull	High	-40~125	SSOP16(B)
CA-IS3742HB	No	4	2	3750	150	8	6	DC-150M	2.5-5.5	1.5	Push-pull	High	-40~125	SSOP16(B)
CA-IS3740LB	No	4	0	3750	150	8	6	DC-150M	2.5-5.5	1.5	Push-pull	Low	-40~125	SSOP16(B)
CA-IS3741LB	No	4	1	3750	150	8	6	DC-150M	2.5-5.5	1.5	Push-pull	Low	-40~125	SSOP16(B)
CA-IS3742LB	No	4	2	3750	150	8	6	DC-150M	2.5-5.5	1.5	Push-pull	Low	-40~125	SSOP16(B)
CA-IS3760HN	No	6	0	3750	150	8	6	DC-150M	2.5-5.5	1.5	Push-pull	High	-40~125	SOIC16-NB(N)
CA-IS3761HN	No	6	1	3750	150	8	6	DC-150M	2.5-5.5	1.5	Push-pull	High	-40~125	SOIC16-NB(N)
CA-IS3762HN	No	6	2	3750	150	8	6	DC-150M	2.5-5.5	1.5	Push-pull	High	-40~125	SOIC16-NB(N)
CA-IS3763HN	No	6	3	3750	150	8	6	DC-150M	2.5-5.5	1.5	Push-pull	High	-40~125	SOIC16-NB(N)
CA-IS3760LN	No	6	0	3750	150	8	6	DC-150M	2.5-5.5	1.5	Push-pull	Low	-40~125	SOIC16-NB(N)
CA-IS3761LN	No	6	1	3750	150	8	6	DC-150M	2.5-5.5	1.5	Push-pull	Low	-40~125	SOIC16-NB(N)
CA-IS3762LN	No	6	2	3750	150	8	6	DC-150M	2.5-5.5	1.5	Push-pull	Low	-40~125	SOIC16-NB(N)
CA-IS3763LN	No	6	3	3750	150	8	6	DC-150M	2.5-5.5	1.5	Push-pull	Low	-40~125	SOIC16-NB(N)
CA-IS3760HW	No	6	0	5000	150	10	6	DC-150M	2.5-5.5	1.5	Push-pull	High	-40~125	SOIC16-WB(W)
CA-IS3761HW	No	6	1	5000	150	10	6	DC-150M	2.5-5.5	1.5	Push-pull	High	-40~125	SOIC16-WB(W)
CA-IS3762HW	No	6	2	5000	150	10	6	DC-150M	2.5-5.5	1.5	Push-pull	High	-40~125	SOIC16-WB(W)
CA-IS3763HW	No	6	3	5000	150	10	6	DC-150M	2.5-5.5	1.5	Push-pull	High	-40~125	SOIC16-WB(W)



川土微电子选型表-标准数字隔离器

Chipanalog Products Selection_Standard Digital Isolators

Part number	With iso-power?	Number of channels	Number of reversed channels	Isolation rating (Vrms)	CMTI (kV/ μ s)	Surge rating (kVpk)	ESD rating HBM(kV)	Data rate (bps)	Operating voltage range (V)	Operating current per channel @ 1Mbps (mA,typ)	Output mode	Default output	Temperature range (°C)	Package
CA-IS3760LW	No	6	0	5000	150	10	6	DC-150M	2.5-5.5	1.5	Push-pull	Low	-40~125	SOIC16-WB(W)
CA-IS3761LW	No	6	1	5000	150	10	6	DC-150M	2.5-5.5	1.5	Push-pull	Low	-40~125	SOIC16-WB(W)
CA-IS3762LW	No	6	2	5000	150	10	6	DC-150M	2.5-5.5	1.5	Push-pull	Low	-40~125	SOIC16-WB(W)
CA-IS3763LW	No	6	3	5000	150	10	6	DC-150M	2.5-5.5	1.5	Push-pull	Low	-40~125	SOIC16-WB(W)
CA-IS3760HB	No	6	0	3750	50	8	6	DC-150M	2.5-5.5	1.5	Push-pull	High	-40~125	SSOP16(B)
CA-IS3761HB	No	6	1	3750	50	8	6	DC-150M	2.5-5.5	1.5	Push-pull	High	-40~125	SSOP16(B)
CA-IS3762HB	No	6	2	3750	50	8	6	DC-150M	2.5-5.5	1.5	Push-pull	High	-40~125	SSOP16(B)
CA-IS3763HB	No	6	3	3750	50	8	6	DC-150M	2.5-5.5	1.5	Push-pull	High	-40~125	SSOP16(B)
CA-IS3760LB	No	6	0	3750	50	8	6	DC-150M	2.5-5.5	1.5	Push-pull	Low	-40~125	SSOP16(B)
CA-IS3761LB	No	6	1	3750	50	8	6	DC-150M	2.5-5.5	1.5	Push-pull	Low	-40~125	SSOP16(B)
CA-IS3762LB	No	6	2	3750	50	8	6	DC-150M	2.5-5.5	1.5	Push-pull	Low	-40~125	SSOP16(B)
CA-IS3763LB	No	6	3	3750	50	8	6	DC-150M	2.5-5.5	1.5	Push-pull	Low	-40~125	SSOP16(B)



川土微电子选型表-汽车级标准数字隔离器

Chipanalog Products Selection_Automotive Standard Digital Isolators

Part number	With iso-power?	Number of channels	Number of reversed channels	Isolation rating (Vrms)	CMTI (kV/ μ s)	Surge rating (kVpk)	ESD rating HBM(kV)	Data rate (bps)	Operating voltage range (V)	Operating current per channel @ 1Mbps (mA,typ)	Output mode	Default output	Temperature range (°C)	Package
CA-IS3710HS-Q1	No	1	0	3750	150	8	6	DC-150M	2.5-5.5	1.5	Push-pull	High	-40~125	SOIC8(S)
CA-IS3710LS-Q1	No	1	0	3750	150	8	6	DC-150M	2.5-5.5	1.5	Push-pull	Low	-40~125	SOIC8(S)
CA-IS3720HS-Q1	No	2	0	3750	150	8	6	DC-150M	2.5-5.5	1.5	Push-pull	High	-40~125	SOIC8(S)
CA-IS3720LS-Q1	No	2	0	3750	150	8	6	DC-150M	2.5-5.5	1.5	Push-pull	Low	-40~125	SOIC8(S)
CA-IS3721HS-Q1	No	2	1	3750	150	8	6	DC-150M	2.5-5.5	1.5	Push-pull	High	-40~125	SOIC8(S)
CA-IS3721LS-Q1	No	2	1	3750	150	8	6	DC-150M	2.5-5.5	1.5	Push-pull	Low	-40~125	SOIC8(S)
CA-IS3722HS-Q1	No	2	1	3750	150	8	6	DC-150M	2.5-5.5	1.5	Push-pull	High	-40~125	SOIC8(S)
CA-IS3722LS-Q1	No	2	1	3750	150	8	6	DC-150M	2.5-5.5	1.5	Push-pull	Low	-40~125	SOIC8(S)
CA-IS3720HW-Q1	No	2	0	5000	150	10	6	DC-150M	2.5-5.5	1.5	Push-pull	High	-40~125	SOIC16-WB(W)
CA-IS3720LW-Q1	No	2	0	5000	150	10	6	DC-150M	2.5-5.5	1.5	Push-pull	Low	-40~125	SOIC16-WB(W)
CA-IS3721HW-Q1	No	2	1	5000	150	10	6	DC-150M	2.5-5.5	1.5	Push-pull	High	-40~125	SOIC16-WB(W)
CA-IS3721LW-Q1	No	2	1	5000	150	10	6	DC-150M	2.5-5.5	1.5	Push-pull	Low	-40~125	SOIC16-WB(W)
CA-IS3722HW-Q1	No	2	1	5000	150	10	6	DC-150M	2.5-5.5	1.5	Push-pull	High	-40~125	SOIC16-WB(W)
CA-IS3722LW-Q1	No	2	1	5000	150	10	6	DC-150M	2.5-5.5	1.5	Push-pull	High	-40~125	SOIC16-WB(W)
CA-IS3720HG-Q1	No	2	0	5000	150	10	6	DC-150M	2.5-5.5	1.5	Push-pull	High	-40~125	SOIC8-WB(G)
CA-IS3720LG-Q1	No	2	0	5000	150	10	6	DC-150M	2.5-5.5	1.5	Push-pull	Low	-40~125	SOIC8-WB(G)
CA-IS3722HG-Q1	No	2	1	5000	150	10	6	DC-150M	2.5-5.5	1.5	Push-pull	High	-40~125	SOIC8-WB(G)
CA-IS3722LG-Q1	No	2	1	5000	150	10	6	DC-150M	2.5-5.5	1.5	Push-pull	Low	-40~125	SOIC8-WB(G)
CA-IS3740HW-Q1	No	4	0	5000	150	10	6	DC-150M	2.5-5.5	1.5	Push-pull	High	-40~125	SOIC16-WB(W)
CA-IS3740LW-Q1	No	4	0	5000	150	10	6	DC-150M	2.5-5.5	1.5	Push-pull	Low	-40~125	SOIC16-WB(W)



川土微电子选型表-汽车级标准数字隔离器

Chipanalog Products Selection_Automotive Standard Digital Isolators

Part number	With iso-power?	Number of channels	Number of reversed channels	Isolation rating (Vrms)	CMTI (kV/ μ s)	Surge rating (kVpk)	ESD rating HBM(kV)	Data rate (bps)	Operating voltage range (V)	Operating current per channel @ 1Mbps (mA,typ)	Output mode	Default output	Temperature range (°C)	Package
CA-IS3741HW-Q1	No	4	1	5000	150	10	6	DC-150M	2.5-5.5	1.5	Push-pull	High	-40~125	SOIC16-WB(W)
CA-IS3741LW-Q1	No	4	1	5000	150	10	6	DC-150M	2.5-5.5	1.5	Push-pull	Low	-40~125	SOIC16-WB(W)
CA-IS3742HW-Q1	No	4	2	5000	150	10	6	DC-150M	2.5-5.5	1.5	Push-pull	High	-40~125	SOIC16-WB(W)
CA-IS3742LW-Q1	No	4	2	5000	150	10	6	DC-150M	2.5-5.5	1.5	Push-pull	Low	-40~125	SOIC16-WB(W)



川土微电子选型表-通用数字隔离器

Chipanalog Products Selection_Cost-effective Digital Isolators

Part number	With iso-power?	Number of channels	Number of reversed channels	Isolation rating (Vrms)	CMTI (kV/μs)	Surge rating (kVpk)	ESD rating HBM(kV)	Data rate (bps)	Operating voltage range (V)	Operating current per channel @ 1Mbps (mA,typ)	Output mode	Default output	Temperature range (°C)	Package
CA-IS3720CLS	No	2	0	3750	150	5.3	8	DC-40M	3.0-5.5	2.6	推挽	Low	-40~125	SOIC8(S)
CA-IS3720CHS	No	2	0	3750	150	5.3	8	DC-40M	3.0-5.5	2.6	推挽	High	-40~125	SOIC8(S)
CA-IS3721CLS	No	2	1	3750	150	5.3	8	DC-40M	3.0-5.5	2.6	推挽	Low	-40~125	SOIC8(S)
CA-IS3721CHS	No	2	1	3750	150	5.3	8	DC-40M	3.0-5.5	2.6	推挽	High	-40~125	SOIC8(S)
CA-IS3722CLS	No	2	1	3750	150	5.3	8	DC-40M	3.0-5.5	2.6	推挽	Low	-40~125	SOIC8(S)
CA-IS3722CHS	No	2	1	3750	150	5.3	8	DC-40M	3.0-5.5	2.6	推挽	High	-40~125	SOIC8(S)
CA-IS3731CHW	No	3	1	5000	150	11.3	8	DC-40M	3.0-5.5	2.0	推挽	High	-40~125	SOIC16-WB(W)
CA-IS3731CLW	No	3	1	5000	150	11.3	8	DC-40M	3.0-5.5	2.0	推挽	Low	-40~125	SOIC16-WB(W)
CA-IS3740CHW	No	4	0	5000	150	11.3	8	DC-40M	3.0-5.5	2.0	推挽	High	-40~125	SOIC16-WB(W)
CA-IS3740CLW	No	4	0	5000	150	11.3	8	DC-40M	3.0-5.5	2.0	推挽	Low	-40~125	SOIC16-WB(W)
CA-IS3741CHW	No	4	1	5000	150	11.3	8	DC-40M	3.0-5.5	2.0	推挽	High	-40~125	SOIC16-WB(W)
CA-IS3741CLW	No	4	1	5000	150	11.3	8	DC-40M	3.0-5.5	2.0	推挽	Low	-40~125	SOIC16-WB(W)
CA-IS3742CHW	No	4	2	5000	150	11.3	8	DC-40M	3.0-5.5	2.0	推挽	High	-40~125	SOIC16-WB(W)
CA-IS3742CLW	No	4	2	5000	150	11.3	8	DC-40M	3.0-5.5	2.0	推挽	Low	-40~125	SOIC16-WB(W)
CA-IS3720CHG	No	2	0	5000	150	11.3	8	DC-40M	3.0-5.5	2.6	推挽	High	-40~125	SOIC8-WB(G)
CA-IS3720CLG	No	2	0	5000	150	11.3	8	DC-40M	3.0-5.5	2.6	推挽	High	-40~125	SOIC8-WB(G)
CA-IS3721CHG	No	2	1	5000	150	11.3	8	DC-40M	3.0-5.5	2.6	推挽	High	-40~125	SOIC8-WB(G)
CA-IS3721CLG	No	2	1	5000	150	11.3	8	DC-40M	3.0-5.5	2.6	推挽	High	-40~125	SOIC8-WB(G)
CA-IS3722CHG	No	2	1	5000	150	11.3	8	DC-40M	3.0-5.5	2.6	推挽	High	-40~125	SOIC8-WB(G)



川土微电子选型表-通用数字隔离器

Chipanalog Products Selection_Cost-effective Digital Isolators

Part number	With iso-power?	Number of channels	Number of reversed channels	Isolation rating (Vrms)	CMTI (kV/ μ s)	Surge rating (kVpk)	ESD rating HBM(kV)	Data rate (bps)	Operating voltage range (V)	Operating current per channel @ 1Mbps (mA,typ)	Output mode	Default output	Temperature range (°C)	Package
CA-IS3722CLG	No	2	1	5000	150	11.3	8	DC-40M	3.0-5.5	2.6	Push-pull	High	-40~125	SOIC8-WB(G)
CA-IS3720CLW	No	2	0	5000	150	11.3	8	DC-40M	3.0-5.5	2.6	Push-pull	Low	-40~125	SOIC16-WB(W)
CA-IS3720CHW	No	2	0	5000	150	11.3	8	DC-40M	3.0-5.5	2.6	Push-pull	High	-40~125	SOIC16-WB(W)
CA-IS3721CHW	No	2	1	5000	150	11.3	8	DC-40M	3.0-5.5	2.6	Push-pull	High	-40~125	SOIC16-WB(W)
CA-IS3722CHW	No	2	1	5000	150	11.3	8	DC-40M	3.0-5.5	2.6	Push-pull	High	-40~125	SOIC16-WB(W)
CA-IS3760CLW	No	6	0	5000	150	11.3	8	DC-40M	3.0-5.5	2.2	Push-pull	Low	-40~125	SOIC16-WB(W)
CA-IS3760CHW	No	6	0	5000	150	11.3	8	DC-40M	3.0-5.5	2.2	Push-pull	High	-40~125	SOIC16-WB(W)
CA-IS3761CLW	No	6	1	5000	150	11.3	8	DC-40M	3.0-5.5	2.2	Push-pull	Low	-40~125	SOIC16-WB(W)
CA-IS3761CHW	No	6	1	5000	150	11.3	8	DC-40M	3.0-5.5	2.2	Push-pull	High	-40~125	SOIC16-WB(W)
CA-IS3762CLW	No	6	2	5000	150	11.3	8	DC-40M	3.0-5.5	2.2	Push-pull	Low	-40~125	SOIC16-WB(W)
CA-IS3762CHW	No	6	2	5000	150	11.3	8	DC-40M	3.0-5.5	2.2	Push-pull	High	-40~125	SOIC16-WB(W)
CA-IS3763CLW	No	6	3	5000	150	11.3	8	DC-40M	3.0-5.5	2.2	Push-pull	Low	-40~125	SOIC16-WB(W)
CA-IS3763CHW	No	6	3	5000	150	11.3	8	DC-40M	3.0-5.5	2.2	Push-pull	High	-40~125	SOIC16-WB(W)



川土微电子选型表-超低功耗数字隔离器

Chipalog Products Selection_Low power Digital Isolators

Part number	With iso-power?	Number of channels	Number of reversed channels	Isolation rating (Vrms)	CMTI (kV/ μ s)	Surge rating (kVpk)	ESD rating HBM(kV)	Data rate (bps)	Operating voltage range (V)	Operating current per channel @ 1Mbps (mA,typ)	Output mode	Default output	Temperature range (°C)	Package
CS817x22HS	No	2	1	3750	150	6.4	5	200k	2.5-5.5	160	Push-pull	High	-40~105	SOIC8(S)
CS817x22LS	No	2	1	3750	150	6.4	5	200k	2.5-5.5	160	Push-pull	Low	-40~105	SOIC8(S)
CS817x20HS	No	2	0	3750	150	6.4	5	200k	2.5-5.5	160	Push-pull	High	-40~105	SOIC8(S)
CS817x20LS	No	2	0	3750	150	6.4	5	200k	2.5-5.5	160	Push-pull	Low	-40~105	SOIC8(S)

川土微电子选型表-增强数字隔离器

Chipalog Products Selection_Reinforced Digital Isolators

Part number	With iso-power?	Number of channels	Number of reversed channels	Isolation rating (Vrms)	CMTI (kV/ μ s)	Surge rating (kVpk)	ESD rating HBM(kV)	Data rate (bps)	Operating voltage range (V)	Operating current per channel @ 1Mbps (mA,typ)	Output mode	Default output	Temperature range (°C)	Package
CA-IS3820HG	No	2	0	5700	150	12.8	6	DC-150M	2.5-5.5	1.5	Push-pull	High	-40~125	SOIC8-WB(G)
CA-IS3820LG	No	2	0	5700	150	12.8	6	DC-150M	2.5-5.5	1.5	Push-pull	Low	-40~125	SOIC8-WB(G)
CA-IS3821HG	No	2	1	5700	150	12.8	6	DC-150M	2.5-5.5	1.5	Push-pull	High	-40~125	SOIC8-WB(G)
CA-IS3821LG	No	2	1	5700	150	12.8	6	DC-150M	2.5-5.5	1.5	Push-pull	Low	-40~125	SOIC8-WB(G)
CA-IS3822HG	No	2	1	5700	150	12.8	6	DC-150M	2.5-5.5	1.5	Push-pull	High	-40~125	SOIC8-WB(G)
CA-IS3822LG	No	2	1	5700	150	12.8	6	DC-150M	2.5-5.5	1.5	Push-pull	Low	-40~125	SOIC8-WB(G)
CA-IS3820HW	No	2	0	5700	150	12.8	6	DC-150M	2.5-5.5	1.5	Push-pull	High	-40~125	SOIC16-WB(W)
CA-IS3820LW	No	2	0	5700	150	12.8	6	DC-150M	2.5-5.5	1.5	Push-pull	Low	-40~125	SOIC16-WB(W)
CA-IS3821HW	No	2	1	5700	150	12.8	6	DC-150M	2.5-5.5	1.5	Push-pull	High	-40~125	SOIC16-WB(W)
CA-IS3821LW	No	2	1	5700	150	12.8	6	DC-150M	2.5-5.5	1.5	Push-pull	Low	-40~125	SOIC16-WB(W)



川土微电子选型表-增强数字隔离器

Chipanalog Products Selection_Reinforced Digital Isolators

Part number	With iso-power?	Number of channels	Number of reversed channels	Isolation rating (Vrms)	CMTI (kV/ μ s)	Surge rating (kVpk)	ESD rating HBM(kV)	Data rate (bps)	Operating voltage range (V)	Operating current per channel @ 1Mbps (mA,typ)	Output mode	Default output	Temperature range (°C)	Package
CA-IS3822HW	No	2	1	5700	150	12.8	6	DC-150M	2.5-5.5	1.5	Push-pull	High	-40~125	SOIC16-WB(W)
CA-IS3822LW	No	2	1	5700	150	12.8	6	DC-150M	2.5-5.5	1.5	Push-pull	Low	-40~125	SOIC16-WB(W)
CA-IS3820HWW	No	2	0	5700	150	12.8	6	DC-150M	2.5-5.5	1.5	Push-pull	High	-40~125	SOIC16-WWB(WW)
CA-IS3820LWW	No	2	0	5700	150	12.8	6	DC-150M	2.5-5.5	1.5	Push-pull	Low	-40~125	SOIC16-WWB(WW)
CA-IS3821HWW	No	2	1	5700	150	12.8	6	DC-150M	2.5-5.5	1.5	Push-pull	High	-40~125	SOIC16-WWB(WW)
CA-IS3821LWW	No	2	1	5700	150	12.8	6	DC-150M	2.5-5.5	1.5	Push-pull	Low	-40~125	SOIC16-WWB(WW)
CA-IS3822HWW	No	2	1	5700	150	12.8	6	DC-150M	2.5-5.5	1.5	Push-pull	High	-40~125	SOIC16-WWB(WW)
CA-IS3822LWW	No	2	1	5700	150	12.8	6	DC-150M	2.5-5.5	1.5	Push-pull	Low	-40~125	SOIC16-WWB(WW)
CA-IS3830HW	No	3	0	5700	150	12.8	6	DC-150M	2.5-5.5	1.5	Push-pull	High	-40~125	SOIC16-WB(W)
CA-IS3830LW	No	3	0	5700	150	12.8	6	DC-150M	2.5-5.5	1.5	Push-pull	Low	-40~125	SOIC16-WB(W)
CA-IS3831HW	No	3	1	5700	150	12.8	6	DC-150M	2.5-5.5	1.5	Push-pull	High	-40~125	SOIC16-WB(W)
CA-IS3831LW	No	3	1	5700	150	12.8	6	DC-150M	2.5-5.5	1.5	Push-pull	Low	-40~125	SOIC16-WB(W)
CA-IS3830HWW	No	3	0	5700	150	12.8	6	DC-150M	2.5-5.5	1.5	Push-pull	High	-40~125	SOIC16-WWB(WW)
CA-IS3830LWW	No	3	0	5700	150	12.8	6	DC-150M	2.5-5.5	1.5	Push-pull	Low	-40~125	SOIC16-WWB(WW)
CA-IS3831HWW	No	3	1	5700	150	12.8	6	DC-150M	2.5-5.5	1.5	Push-pull	High	-40~125	SOIC16-WWB(WW)
CA-IS3831LWW	No	3	1	5700	150	12.8	6	DC-150M	2.5-5.5	1.5	Push-pull	Low	-40~125	SOIC16-WWB(WW)
CA-IS3840HW	No	4	0	5700	150	12.8	6	DC-150M	2.5-5.5	1.5	Push-pull	High	-40~125	SOIC16-WB(W)
CA-IS3840LW	No	4	0	5700	150	12.8	6	DC-150M	2.5-5.5	1.5	Push-pull	Low	-40~125	SOIC16-WB(W)
CA-IS3841HW	No	4	1	5700	150	12.8	6	DC-150M	2.5-5.5	1.5	Push-pull	High	-40~125	SOIC16-WB(W)
CA-IS3841LW	No	4	1	5700	150	12.8	6	DC-150M	2.5-5.5	1.5	Push-pull	Low	-40~125	SOIC16-WB(W)
CA-IS3842HW	No	4	2	5700	150	12.8	6	DC-150M	2.5-5.5	1.5	Push-pull	High	-40~125	SOIC16-WB(W)
CA-IS3842LW	No	4	2	5700	150	12.8	6	DC-150M	2.5-5.5	1.5	Push-pull	Low	-40~125	SOIC16-WB(W)



川土微电子选型表-增强数字隔离器

Chipanalog Products Selection_Reinforced Digital Isolators

Part number	With iso-power?	Number of channels	Number of reversed channels	Isolation rating (Vrms)	CMTI (kV/μs)	Surge rating (kVpk)	ESD rating HBM(kV)	Data rate (bps)	Operating voltage range (V)	Operating current per channel @ 1Mbps (mA.typ)	Output mode	Default output	Temperature range (°C)	Package
CA-IS3840HWW	No	4	0	5700	150	12.8	6	DC-150M	2.5-5.5	1.5	Push-pull	High	-40~125	SOIC16-WWB(WW)
CA-IS3840LWW	No	4	4	5700	150	12.8	6	DC-150M	2.5-5.5	1.5	Push-pull	Low	-40~125	SOIC16-WWB(WW)
CA-IS3841HWW	No	4	1	5700	150	12.8	6	DC-150M	2.5-5.5	1.5	Push-pull	High	-40~125	SOIC16-WWB(WW)
CA-IS3841LWW	No	4	1	5700	150	12.8	6	DC-150M	2.5-5.5	1.5	Push-pull	Low	-40~125	SOIC16-WWB(WW)
CA-IS3842HWW	No	4	2	5700	150	12.8	6	DC-150M	2.5-5.5	1.5	Push-pull	High	-40~125	SOIC16-WWB(WW)
CA-IS3842LWW	No	4	2	5700	150	12.8	6	DC-150M	2.5-5.5	1.5	Push-pull	Low	-40~125	SOIC16-WWB(WW)
CA-IS3860HW	No	6	0	5700	150	12.8	6	DC-150M	2.5-5.5	1.5	Push-pull	High	-40~125	SOIC16-WB(W)
CA-IS3860LW	No	6	0	5700	150	12.8	6	DC-150M	2.5-5.5	1.5	Push-pull	Low	-40~125	SOIC16-WB(W)
CA-IS3861HW	No	6	1	5700	150	12.8	6	DC-150M	2.5-5.5	1.5	Push-pull	High	-40~125	SOIC16-WB(W)
CA-IS3861LW	No	6	1	5700	150	12.8	6	DC-150M	2.5-5.5	1.5	Push-pull	Low	-40~125	SOIC16-WB(W)
CA-IS3862HW	No	6	2	5700	150	12.8	6	DC-150M	2.5-5.5	1.5	Push-pull	High	-40~125	SOIC16-WB(W)
CA-IS3862LW	No	6	2	5700	150	12.8	6	DC-150M	2.5-5.5	1.5	Push-pull	Low	-40~125	SOIC16-WB(W)
CA-IS3863HW	No	6	3	5700	150	12.8	6	DC-150M	2.5-5.5	1.5	Push-pull	High	-40~125	SOIC16-WB(W)
CA-IS3863LW	No	6	3	5700	150	12.8	6	DC-150M	2.5-5.5	1.5	Push-pull	Low	-40~125	SOIC16-WB(W)

川土微电子选型表-高压I/O数字隔离器

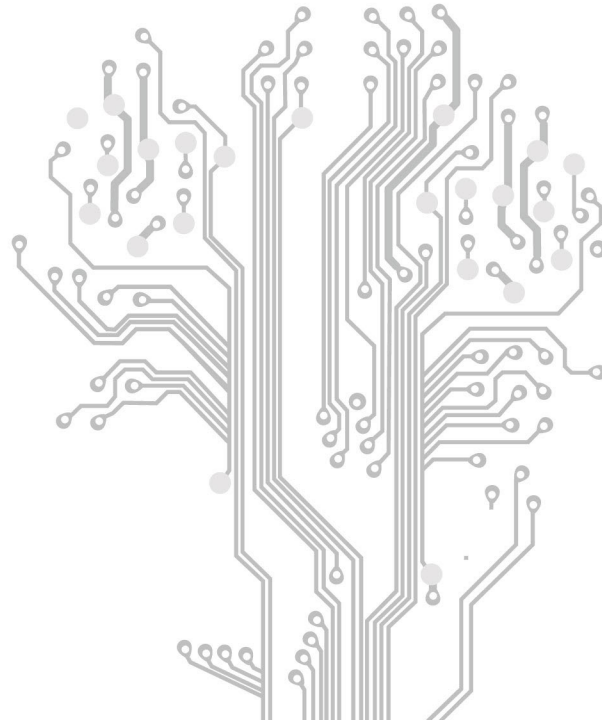
Chipanalog Products Selection_High Voltage I/O Digital Isolators

Part number	With iso-power?	Number of channels	Number of reversed channels	Isolation rating (Vrms)	CMTI (kV/μs)	Surge rating (kVpk)	ESD rating HBM(kV)	Data rate (bps)	Output Withstand Voltage (V)	Input Current Threshold (mA)	Maximum Forward Input Current (mA)	Input Reverse Withstand Voltage (V)	Temperature range (°C)	Package
CA-IS2421AST	No	2	1	3750	150	5.3	8	150K	80	1.6	50	6	-40~125	SOIC7 (ST)



ISOLATED INTERFACE

隔离接口





川土微电子选型表-隔离I2C

Chipanalog Products Selection_Isolated I2C

Part number	With iso-power?	SCK	Isolation rating (Vrms)	CMTI (kV/ μ s)	Surge rating (kVpk)	ESD rating(kV)	Data rate (Mbps)	Operating voltage range (V)	Temperature range(°C)	Package
CA-IS3020S	No	Bidirection	3750	150	6.5	8	2	3~5.5	-40~125	SOIC8(S)
CA-IS3021S	No	Unidirection	3750	150	6.5	8	2	3~5.5	-40~125	SOIC8(S)
CA-IS3020G	No	Bidirection	5000	150	12.8	8	2	3~5.5	-40~125	SOIC8-WB(G)
CA-IS3021G	No	Unidirection	5000	150	12.8	8	2	3~5.5	-40~125	SOIC8-WB(G)
CA-IS3020W	No	Bidirection	5000	150	12.8	8	2	3~5.5	-40~125	SOIC16-WB(W)
CA-IS3021W	No	Unidirection	5000	150	12.8	8	2	3~5.5	-40~125	SOIC16-WB(W)
CA-IS3020WG	No	Bidirection	7500	150	12.8	8	2	3~5.5	-40~125	SOIC8-WWB(WG)

川土微电子选型表-隔离CAN收发器

Chipanalog Products Selection_Isolated CAN Transceivers

Part number	With iso-power?	Fault protection (V)	Isolation rating (Vrms)	CMTI (kV/ μ s)	Surge rating (kVpk)	ESD rating(kV) bus pins	Data rate (Mbps)	Logic operating voltage range (V)	Temperature range (°C)	Package
CA-IS3050G	No	±58	5000	150	12.8	8	1	2.5~5.5	-40~125	SOIC8-WB(G)
CA-IS3052G	No	±58	5000	150	12.8	8	1	2.5~5.5	-40~125	SOIC8-WB(G)
CA-IS3050W	No	±58	5000	150	12.8	8	1	2.5~5.5	-40~125	SOIC16-WB(W)
CA-IS3052W	No	±58	5000	150	12.8	8	1	2.5~5.5	-40~125	SOIC16-WB(W)
CA-IS3050U	No	±58	3750	150	8.125	8	1	2.5~5.5	-40~125	DUB8 (U)
CA-IS3050WG	No	±58	7500	150	12.8	8	1	2.5~5.5	-40~125	SOIC8-WWB(WG)
CA-IS1044S	No	±58	3750	100	5.3	7	2	2.5~5.5	-40~125	SOIC8(S)



川土微电子选型表-通用型隔离CAN收发器

Chipanalog Products Selection_Universal Isolated CAN Transceivers

Part number	With iso-power?	Fault protection (V)	Isolation rating (Vrms)	CMTI (kV/ μ s)	Surge rating (kVpk)	ESD rating(kV) bus pins	Data rate (Mbps)	Logic operating voltage range(V)	Temperature range (°C)	Package
CA-IS3050CU	No	±52	3750	150	5.3	8	5	3~5.5	-40~125	DUB8 (U)
CA-IS3050CG	No	±52	5000	150	12.8	8	5	3~5.5	-40~125	SOIC8-WB (G)
CA-IS3050CW	No	±52	5000	150	12.8	8	5	3~5.5	-40~125	SOIC16-WB (W)
CA-IS3052CG	No	±52	5000	150	12.8	8	5	3~5.5	-40~125	SOIC8-WB (G)
CA-IS3052CW	No	±52	5000	150	12.8	8	5	3~5.5	-40~125	SOIC16-WB (W)

川土微电子选型表-带电源隔离CAN收发器 (μMIC产品)

Chipanalog Products Selection_Isolated CAN Transceivers with Iso-power

Part number	With iso-power?	Fault protection (V)	Isolation rating (Vrms)	CMTI (kV/ μ s)	Surge rating (kVpk)	ESD rating(kV) bus pins	Data rate (Mbps)	Operating voltage range (V)	Temperature range (°C)	Package
CA-IS3062W	Yes	±58	5000	150	12.8	6	1	4.5~5.5	-40~125	SOIC16-WB(W)
CA-IS3062VW	Yes	±58	5000	150	12.8	6	1	4.5~5.5	-40~125	SOIC16-WB(W)
CA-IS2062W	Yes	±58	3750	150	12.8	6	1	4.5~5.5	-40~125	SOIC16-WB(W)
CA-IS2062VW	Yes	±58	3750	150	12.8	6	1	4.5~5.5	-40~125	SOIC16-WB(W)
CA-IS2062A	Yes	±42	2500	150	6.5	6	5	4.5~5.5	-40~125	LGA16 (A)



川土微电子选型表-隔离RS-485/422收发器

Chipanalog Products Selection_Isolated RS-485/422 Transceivers

Part number	With iso-power?	Full/half duplex	Isolation rating (Vrms)	CMTI (kV/ μ s)	Surge rating (kVpk)	ESD rating(kV) bus pins	Data rate (Mbps)	Operating voltage range (V)	Temperature range (°C)	Package
CA-IS3080WX	No	Full duplex	5000	150	12.8	20	0.5	2.375~5.5	-40~125	SOIC16-WB(W)
CA-IS3086WX	No	Full duplex	5000	150	12.8	20	10	2.375~5.5	-40~125	SOIC16-WB(W)
CA-IS3082WX	No	Half duplex	5000	150	12.8	20	0.5	2.375~5.5	-40~125	SOIC16-WB(W)
CA-IS3082WNX	No	Half duplex	5000	150	12.8	20	0.5	2.375~5.5	-40~125	SOIC16-WB(W)
CA-IS3088WX	No	Half duplex	5000	150	12.8	20	20	2.375~5.5	-40~125	SOIC16-WB(W)
CA-IS3089WX	No	Half duplex	5000	150	12.8	8	40	2.375~5.5	-40~125	SOIC16-WB(W)
CA-IS2082B	No	Half duplex	3000	100	5.3	8	20	2.375~5.5	-40~125	SSOP16(B)
CA-IS3082WW	No	Half duplex	7500	150	12.8	20	0.5	2.375~5.5	-40~125	SOIC16-WWB(WW)

川土微电子选型表-隔离RS-485/422收发器

Chipanalog Products Selection_Isolated RS-485/422 Transceivers

Part number	With iso-power?	Full/half duplex	Isolation rating (Vrms)	CMTI (kV/ μ s)	Surge rating (kVpk)	ESD rating(kV) bus pins	Data rate (Mbps)	Operating voltage range (V)	Temperature range (°C)	Package
CA-IS3082CWX	No	Half duplex	5000	150	12.8	20	0.5	3.0~5.5	-40~125	SOIC16-WB(W)
CA-IS3088CWNX	No	Half duplex	5000	150	12.8	20	12	3.0~5.5	-40~125	SOIC16-WB(W)



川土微电子选型表-带隔离电源隔离RS-485/422收发器 (μMIC产品)

Chipanalog Products Selection_Isolated RS-485/422 Transceivers with Iso-power

Part number	With iso-power?	Full/half duplex	Isolation rating (Vrms)	CMTI (kV/μs)	Surge rating (kVpk)	ESD rating(kV) bus pins	Data rate (Mbps)	Operating voltage range (V)	Temperature range (°C)	Package
CA-IS3092W	Yes	Half duplex	5000	150	12.8	20	0.5	3~5.5	-40~125	SOIC16-WB(W)
CA-IS3092VW	Yes	Half duplex	5000	150	12.8	20	0.5	3~5.5	-40~125	SOIC16-WB(W)
CA-IS3098W	Yes	Half duplex	5000	150	12.8	20	20	3~5.5	-40~125	SOIC16-WB(W)
CA-IS3098VW	Yes	Half duplex	5000	150	12.8	20	20	3~5.5	-40~125	SOIC16-WB(W)
CA-IS2092W	Yes	Half duplex	3750	150	12.8	20	0.5	3~5.5	-40~125	SOIC16-WB(W)
CA-IS2092VW	Yes	Half duplex	3750	150	12.8	20	0.5	3~5.5	-40~125	SOIC16-WB(W)
CA-IS2092A	Yes	Half duplex	2500	150	6.5	20	0.5	3~5.5	-40~125	LGA16(A)

川土微电子选型表-隔离DI/DO

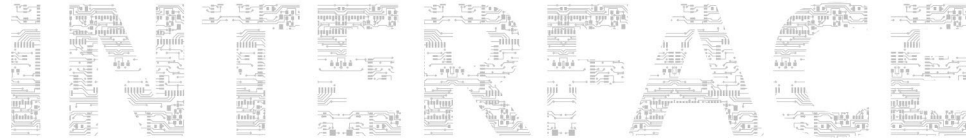
Chipanalog Products Selection_Isolated DI/DO

Part number	Output Interface	Number of high-speed channels	Low-pass filter debounce time(ms)	CMTI (kV/μs)	Surge rating (kVpk)	ESD rating(kV)	Data rate (Mbps)	Operating voltage range (V)	Maximum isolation voltage(V)	Output mode	Temperature range (°C)	Package
CA-IS3980S	Serial	0	0/10/30/100	300	5.3	4	0.25	2.25~5.5	2500	push-pull	-40~125	SSOP20(Y)
CA-IS3980P	Parallel	0	0	300	5.3	4	0.25	2.25~5.5	2500	push-pull	-40~125	SSOP20(Y)
CA-IS3988P	Parallel	8	0	50	5.3	4	2	2.25~5.5	2500	push-pull	-40~125	SSOP20(Y)
CA-IS3980CPTY	Parallel	0	0	150	6.5	6	0.5	2.25~5.5	3750	push-pull	-40~125	TSSOP20(TY)

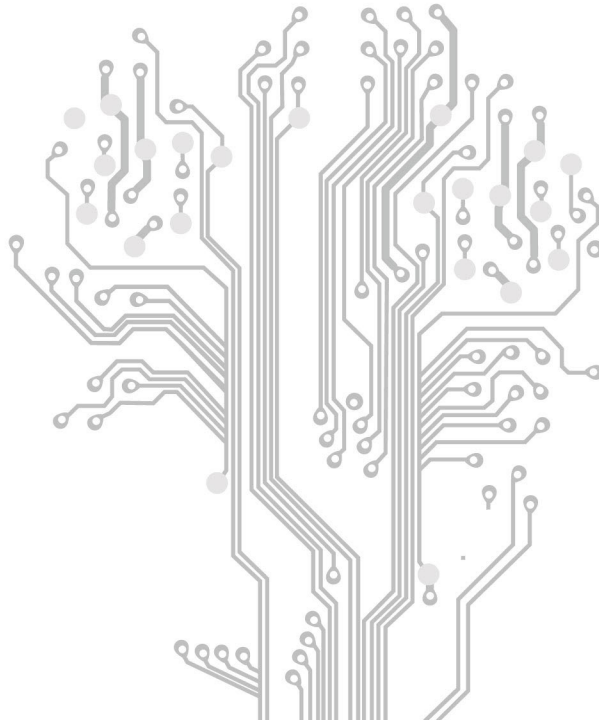
川土微电子选型表-汽车级隔离CAN收发器

Chipanalog Products Selection_Automotive Isolated CAN Transceivers

Part number	With iso-power?	Fault protection(V)	Isolation rating (Vrms)	CMTI (kV/μs)	Surge rating (kVpk)	ESD rating(kV) bus pins	Data rate (Mbps)	Logic operating voltage range (V)	Temperature range (°C)	Package
CA-IS3052G-Q1	No	±58	5000	150	12.8	8	1	2.5~5.5	-40~125	SOIC8-WB(G)



接口





川土微电子选型表-CAN收发器

Chipanalog Products Selection_CAN Transceivers

Part Number	Logic supply input?	Remote wakeup	Data rate (Mbps)	Common mode voltage range (V)	Fault protection (V)	HBM ESD rating other pins(±KV)	HBM ESD rating bus pins (±KV)	Operating voltage range (V)	Logic operating voltage range (V)	Junction temp range (°C)	Package
CA-IF1051HS	No	No	5	-30~30	-70~70	4	6	4.5~5.5	/	-55~150	SOIC8(S)
CA-IF1051S	No	No	5	-30~30	-58~58	4	8	4.5~5.5	/	-55~150	SOIC8(S)
CA-IF1051VS	Yes	No	5	-30~30	-58~58	4	8	4.5~5.5	2.5~5.5	-55~150	SOIC8(S)
CA-IF1030S	No	Yes	1	-12~12	-18~18	4	25	3~3.6	/	-55~150	SOIC8(S)
CA-IF1033S	No	Yes	1	-12~12	-18~18	4	25	3~3.6	/	-55~150	SOIC8(S)
CA-IF1034S	No	Yes	1	-12~12	-18~18	4	25	3~3.6	/	-55~150	SOIC8(S)
CA-IF4420S	Yes	No	5	-30~30	-58~58	4	35	4.5~5.5	1.8~5.5	-55~150	SOIC8(S)

川土微电子选型表-汽车级CAN收发器

Chipanalog Products Selection_Automotive CAN Transceivers

Part Number	Logic supply input?	Remote wakeup	Data rate (Mbps)	Common mode voltage range (V)	Fault protection (V)	HBM ESD rating other pins(±KV)	HBM ESD rating bus pins (±KV)	Operating voltage range (V)	Logic operating voltage range (V)	Junction temp range (°C)	Package
CA-IF1051S-Q1	No	No	5	-30~30	-58~58	4	8	4.5~5.5	/	-55~150	SOIC8(S)
CA-IF1051VS-Q1	Yes	No	5	-30~30	-58~58	4	8	4.5~5.5	2.5~5.5	-55~150	SOIC8(S)
CA-IF1051AS-Q1	No	No	5	-30~30	-58~58	4	8	4.5~5.5	/	-55~150	SOIC8(S)
CA-IF1051AVS-Q1	Yes	No	5	-30~30	-58~58	4	8	4.5~5.5	2.5~5.5	-55~150	SOIC8(S)
CA-IF1042S-Q1	No	Yes	5	-30~30	-70~70	8	16	4.5~5.5	/	-55~150	SOIC8(S)
CA-IF1042VS-Q1	Yes	Yes	5	-30~30	-70~70	8	16	4.5~5.5	3~5.5	-55~150	SOIC8(S)



川土微电子选型表-汽车级CAN收发器

Chipanalog Products Selection_Automotive CAN Transceivers

Part Number	Logic supply Input?	Remote wakeup	Data rate (Mbps)	Common mode voltage range (V)	Fault protection (V)	HBM ESD rating other pins(±KV)	HBM ESD rating bus pins (±KV)	Operating voltage range (V)	Logic operating voltage range (V)	Junction temp range (°C)	Package
CA-IF1044S-Q1	No	Yes	5	-30~30	-58~58	6	8	4.5~5.5	/	-55~150	SOIC8(S)
CA-IF1044VS-Q1	Yes	Yes	5	-30~30	-58~58	6	8	4.5~5.5	3.0~5.5	-55~150	SOIC8(S)
CA-IF1044D-Q1	No	Yes	5	-30~30	-58~58	6	8	4.5~5.5	/	-55~150	DFN8(D)
CA-IF1044VD-Q1	Yes	Yes	5	-30~30	-58~58	6	8	4.5~5.5	3.0~5.5	-55~150	DFN8(D)
CA-IF1044AS-Q1	No	Yes	5	-30~30	-42~42	6	8	4.5~5.5	/	-55~150	SOIC8(S)
CA-IF1044AVS-Q1	Yes	Yes	5	-30~30	-42~42	6	8	4.5~5.5	3.0~5.5	-55~150	SOIC8(S)
CA-IF1044AD-Q1	No	Yes	5	-30~30	-42~42	6	8	4.5~5.5	/	-55~150	DFN8(D)
CA-IF1044AVD-Q1	Yes	Yes	5	-30~30	-42~42	6	8	4.5~5.5	3.0~5.5	-55~150	DFN8(D)
CA-IF1043NF-Q1	Yes	Yes	5	-30~30	-58~58	4	4	4.5~5.5	1.7~5.5	-55~150	SOIC14(NF)
CA-IF1043DF-Q1	Yes	Yes	5	-30~30	-58~58	4	4	4.5~5.5	1.7~5.5	-55~150	DFN14(DF)
CA-IF1042LS-Q1	No	Yes	5	-30~30	-42~42	6	6	4.5~5.5	3.0~5.5	-55~150	SOIC8(S)
CA-IF1042LVS-Q1	Yes	Yes	5	-30~30	-42~42	6	6	4.5~5.5	3.0~5.5	-55~150	SOIC8(S)
CA-IF1145FNF-Q1	Yes	Yes	5	-30~30	-42~42	2	8	4.5~5.5	3.0~5.5	-55~150	SOIC14(NF)
CA-IF1145FDF-Q1	Yes	Yes	5	-30~30	-42~42	2	8	4.5~5.5	3.0~5.5	-55~150	DFN14(DF)



川土微电子选型表-汽车级LIN收发器

Chipanalog Products Selection_Automotive LIN Transceivers

Part Number	With internal LDO?	Remote wakeup	Data rate (Kbps)	Common mode voltage range (V)	Fault protection (V)	HBM ESD rating other pins (±kV)	HBM ESD rating bus pins (±kV)	Operating voltage range (V)	Logic operating voltage range (V)	Junction temp range (°C)	Package
CA-IF1021S-Q1	No	Yes	20	/	-58~58	2	4	5.5-27	/	-55~150	SOIC8(S)
CA-IF1021D-Q1	No	Yes	20	/	-58~58	2	4	5.5-27	/	-55~150	DFN8(D)
CA-IF1024F-Q1	No	Yes	20	/	-42~42	8	14	5-18	/	-40~150	QFN24(F)
CA-IF1024AF-Q1	No	Yes	20	/	-42~42	8	14	5-18	/	-40~150	QFN24(F)
CA-IF1022F-Q1	No	Yes	20	/	-42~42	8	14	5-18	/	-40~150	QFN24(F)
CA-IF1022NF-Q1	No	Yes	20	/	-42~42	8	14	5-18	/	-40~150	SOP14(NF)
CA-IF1021LS-Q1	No	Yes	20	/	-42~42	8	8	5.5-27	/	-55~150	SOIC8(S)
CA-IF1021LD-Q1	No	Yes	20	/	-42~42	8	8	5.5-27	/	-55~150	DFN8(D)
CA-IF1022DF-Q1	No	Yes	20	/	-42~42	8	14	5-18	/	-40~150	DFN14(DF)



川土微电子选型表-RS-485/422收发器

Chipanalog Products Selection_RS-485/422 Transceivers

Part Number	Nodes on bus	Logic supply input?	Full/half duplex	Data rate (Mbps)	Common mode voltage range (V)	Fault protection (V)	HBM ESD rating other pins (\pm KV)	HBM ESD rating bus pins (\pm KV)	Operating voltage range (V)	Temperature range ($^{\circ}$ C)	Package
CA-IF4888HS	256	N/A	Half duplex	0.5	-15~15	-30~30	6	30	3~5.5	-40~125	SOIC8(S)
CA-IF4805HS	256	N/A	Half duplex	0.5	-15~15	-30~30	6	30	3~5.5	-40~125	SOIC8(S)
CA-IF4805FS	256	N/A	Full duplex	0.5	-15~15	-30~30	6	15	3~5.5	-40~125	SOIC8(S)
CA-IF4820HS	256	N/A	Half duplex	20	-15~15	-30~30	6	30	3~5.5	-40~125	SOIC8(S)
CA-IF4820FS	256	N/A	Full duplex	20	-15~15	-30~30	6	15	3~5.5	-40~125	SOIC8(S)
CA-IF4850HS	256	N/A	Half duplex	50	-15~15	-30~30	6	30	3~5.5	-40~125	SOIC8(S)
CA-IF4850FS	256	N/A	Full duplex	50	-15~15	-30~30	6	15	3~5.5	-40~125	SOIC8(S)
CA-IF4805HM	256	N/A	Half duplex	0.5	-15~15	-30~30	6	30	3~5.5	-40~125	MSOP8(M)
CA-IF4805FM	256	N/A	Full duplex	0.5	-15~15	-30~30	6	15	3~5.5	-40~125	MSOP8(M)
CA-IF4820HM	256	N/A	Half duplex	20	-15~15	-30~30	6	30	3~5.5	-40~125	MSOP8(M)
CA-IF4820FM	256	N/A	Full duplex	20	-15~15	-30~30	6	15	3~5.5	-40~125	MSOP8(M)
CA-IF4850HM	256	N/A	Half duplex	50	-15~15	-30~30	6	30	3~5.5	-40~125	MSOP8(M)
CA-IF4850FM	256	N/A	Full duplex	50	-15~15	-30~30	6	15	3~5.5	-40~125	MSOP8(M)
CA-IF4805HD	256	N/A	Half duplex	0.5	-15~15	-30~30	6	30	3~5.5	-40~125	DFN8(D)
CA-IF4805FD	256	N/A	Full duplex	0.5	-15~15	-30~30	6	15	3~5.5	-40~125	DFN8(D)
CA-IF4820HD	256	N/A	Half duplex	20	-15~15	-30~30	6	30	3~5.5	-40~125	DFN8(D)
CA-IF4820FD	256	N/A	Full duplex	20	-15~15	-30~30	6	15	3~5.5	-40~125	DFN8(D)
CA-IF4850HD	256	N/A	Half duplex	50	-15~15	-30~30	6	30	3~5.5	-40~125	DFN8(D)
CA-IF4850FD	256	N/A	Full duplex	50	-15~15	-30~30	6	15	3~5.5	-40~125	DFN8(D)
CA-IF4220NF	256	N/A	Full duplex	20	-15~15	-30~30	6	15	3~5.5	-40~125	SOIC14(NF)



川土微电子选型表-RS-485/422收发器

Chipanalog Products Selection_RS-485/422 Transceivers

Part number	Nodes on bus	Logic supply input?	Full/half duplex	Data rate (Mbps)	Common mode voltage range (V)	Fault protection (V)	HBM ESD rating other pins (\pm KV)	HBM ESD rating bus pins (\pm KV)	Operating voltage range (V)	Temperature range ($^{\circ}$ C)	Package
CS485S	50	N/A	Half duplex	0.25	-7~12	-8~13	8	18	3~5.5	-40~125	SOIC8(S)
CS485M	50	N/A	Half duplex	0.25	-7~12	-8~13	8	18	3~5.5	-40~125	MSOP8(M)
CS48505S	64	N/A	Half duplex	0.5	-7~12	-8~13	8	20	3~5.5	-40~125	SOIC8(S)
CS48520S	64	N/A	Half duplex	20	-7~12	-8~13	8	20	3~5.5	-40~125	SOIC8(S)
CS48505M	64	N/A	Half duplex	0.5	-7~12	-8~13	8	20	3~5.5	-40~125	MSOP8(M)
CS48520M	64	N/A	Half duplex	20	-7~12	-8~13	8	20	3~5.5	-40~125	MSOP8(M)
CS48505D	64	N/A	Half duplex	0.5	-7~12	-8~13	8	20	3~5.5	-40~125	DFN8(D)
CS48520D	64	N/A	Half duplex	20	-7~12	-8~13	8	20	3~5.5	-40~125	DFN8(D)
CS48505AS	256	N/A	Half duplex	0.5	-7~12	-8~13	8	20	3~5.5	-40~125	SOIC8(S)
CS48520AS	256	N/A	Half duplex	20	-7~12	-8~13	8	20	3~5.5	-40~125	SOIC8(S)
CS48505AM	256	N/A	Half duplex	0.5	-7~12	-8~13	8	20	3~5.5	-40~125	MSOP8(M)
CS48520AM	256	N/A	Half duplex	20	-7~12	-8~13	8	20	3~5.5	-40~125	MSOP8(M)
CS48505AD	256	N/A	Half duplex	0.5	-7~12	-8~13	8	20	3~5.5	-40~125	DFN8(D)
CS48520AD	256	N/A	Half duplex	20	-7~12	-8~13	8	20	3~5.5	-40~125	DFN8(D)
CS48520BS	256	N/A	Half duplex	20	-7~12	-8~13	8	20	3~5.5	-40~125	SOIC8(S)



川土微电子选型表-高压RS-485收发器

Chipanalog Products Selection_Reinforced Isolated RS-485 Transceiver

Part number	Logic supply input?	Full/half duplex	Data rate (Mbps)	Common mode voltage range (V)	Fault protection (V)	HBM ESD rating other pins (\pm kV)	HBM ESD rating bus pins (\pm kV)	Operating voltage range (V)	Temperature range ($^{\circ}$ C)	Package
CA-IF4905S	N/A	Half duplex	0.5	-40~40	-65~65	4	30	3~5.5	-40~125	SOIC8(S)
CA-IF4905M	N/A	Half duplex	2	-40~40	-65~65	4	30	3~5.5	-40~125	MSOP8(M)
CA-IF4988S	N/A	Half duplex	2	-40~40	-65~65	4	30	3~5.5	-40~125	SOIC8(S)

川土微电子选型表-AISG调制解调器

Chipanalog Products Selection_AISG Modulators

Part number	Features	RX passband (MHz)	RX threshold (dBm)	TX frequency (MHz)	TXOUT power (dBm)	TXOUT impedance (DC, ohm)	Operating voltage range (V)	Temperature range ($^{\circ}$ C)	Package
CA-IF4023	AISG on/off control, coaxial modem transceiver	1.1~4.17	-18~-12	2.176	5.38~12	0.03	3~5.5	-40~125	QFN16(F)

川土微电子选型表-兼容家庭总线系统(HBS)的收发器

Chipanalog Products Selection_Home Bus System (HBS) Compliant Transceiver

Part number	Features	Data rate (kbps)	Bus polarity detection	Adjustable receiver thresholds?	Termination on-time	Input timeout	Operating voltage range (V)	Temperature range ($^{\circ}$ C)	Package
CA-IF4288	Data and power share one single pair of wires	9.6~200	N/A	N/A	Fixed (34us)	21ms	4.5~5.5	-40~105	QFN24(F)
CA-IF4289	Data and power share one single pair of wires	9.6~200	Yes	Yes	Adjustable (10~500us)	21ms	4.5~5.5	-40~105	QFN24(F)



川土微电子选型表-集成有源电感的家庭总线系统(HBS)的收发器

Chipanalog Products Selection_Home Bus System (HBS) Transceiver with Integrated Active Inductors

Part number	Features	Data rate (kbps)	Maximum V_{RAW} Load Current (mA)	Maximum LDO Load Current (mA)	Termination on-time	Adjustable receiver thresholds?	Operating voltage range (V)	Temperature range (°C)	Package
CA-IF42088	Integrate active inductor and LDO, data and power share one single pair of wires	9.6~200	300	90	Adjustable (10~500us)	Yes	9~24	-40~105	QFN24(F)

川土微电子选型表-RS-232收发器

Chipanalog Products Selection_RS-232 Transceivers

Part number	Features	Data rate (kbps)	Supply current (mA)	Driver slew rate (V/ μ s)	Output short-circuit current (mA)	Input hysteresis (V)	Operating voltage range (V)	Temperature range (°C)	Package
CA-IF43232EN	2Tx/2Rx	250	1	30	35	0.5	3~5.5	-40~125	SOP16(N)
CA-IF43232ETB	2Tx/2Rx	250	1	30	35	0.5	3~5.5	-40~125	TSSOP16(TB)

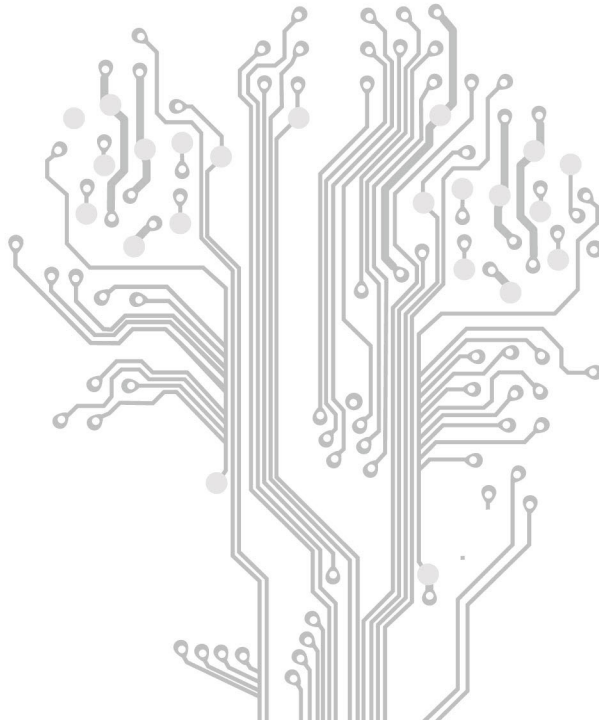


SENSOR

3

SAMPLING

传感与采样





川土微电子选型表-隔离ADC Chipanalog Products Selection_Isolated ADC

Part number	Supply voltage high-side(V)	Supply voltage low-side(V)	Differential input voltage(mV)	Clock(MHz)	GERR(%)	Isolation rating (Vrms)	CMTI (kV/Us)	Output encoded mode	Surge rating (kVpk)	ESD rating HBM/CDM(kV)	Temperature range (°C)	Package
CA-IS1204W	4.5-5.5	3-5.5	±250	5-21 IN	±2	5000	150	Uncoded	12.8	4/2	-40~125	SOIC16-WB(W)
CA-IS1306M25G	3-5.5	3-5.5	±250	5-21 IN	±0.2	5000	150	Uncoded	12.8	4/2	-40~125	SOIC8-WB(G)
CA-IS1306M05G	3-5.5	3-5.5	±50	5-21 IN	±0.2	5000	150	Uncoded	12.8	4/2	-40~125	SOIC8-WB(G)
CA-IS1305AM25W	4.5-5.5	3-5.5	±250	5-21 IN	±0.3	5000	150	Uncoded	12.8	4/2	-40~125	SOIC16-WB(W)
CA-IS1305M25W*	4.5-5.5	3-5.5	±250	5-21 IN	±0.3	5000	150	Uncoded	12.8	4/2	-40~125	SOIC16-WB(W)
CA-IS1306AM25W	3-5.5	3-5.5	±250	5-21 IN	±0.2	5000	150	Uncoded	12.8	4/2	-40~125	SOIC16-WB(W)
CA-IS1306M25W	3-5.5	3-5.5	±250	5-21 IN	±0.2	5000	150	Uncoded	12.8	4/2	-40~125	SOIC16-WB(W)

川土微电子选型表-隔离放大器 Chipanalog Products Selection_Isolated Amplifiers

Part number	Supply voltage high-side(V)	Supply voltage low-side(V)	Differential input voltage(mV)	Fixed gain	GERR(%)	Isolation rating (Vrms)	CMTI (kV/uS)	Output noise (mVrms)	Surge rating (kVpk)	ESD rating HBM/CDM(kV)	Temperature range (°C)	Package
CA-IS1200U	3-5.5	3-5.5	±250	8	±0.5	3750	150	0.33	5.3	4/2	-40~125	DUB8(U)
CA-IS1200G	3-5.5	3-5.5	±250	8	±0.5	5000	150	0.33	12.8	4/2	-40~125	SOIC8-WB(G)
CA-IS1300G25G	3-5.5	3-5.5	±250	8.2	±0.5	5000	150	0.33	12.8	4/2	-40~125	SOIC8-WB(G)
CA-IS1300G05G	3-5.5	3-5.5	±50	41	±0.3	5000	150	0.32	12.8	4/2	-40~125	SOIC8-WB(G)
CA-IS1300B25G	3-5.5	3-5.5	±250	8.2	±0.3	5000	150	0.33	12.8	4/2	-40~125	SOIC8-WB(G)
CA-IS1311G	3-5.5	3-5.5	-0.1~2	1	±0.3	5000	30	0.23	12.8	4/2	-40~125	SOIC8-WB(G)
CA-IS1311BG	3-5.5	3-5.5	-0.1~2	1	±0.3	5000	150	0.23	12.8	4/2	-40~125	SOIC8-WB(G)
CA-IS1300B25G-Q1	3-5.5	3-5.5	±250	8.2	±0.3	5000	150	0.33	12.8	4/2	-40~125	SOIC8-WB(G)
CA-IS1311G-Q1	3-5.5	3-5.5	-0.1~2	1	±0.3	5000	150	0.23	12.8	4/2	-40~125	SOIC8-WB(G)



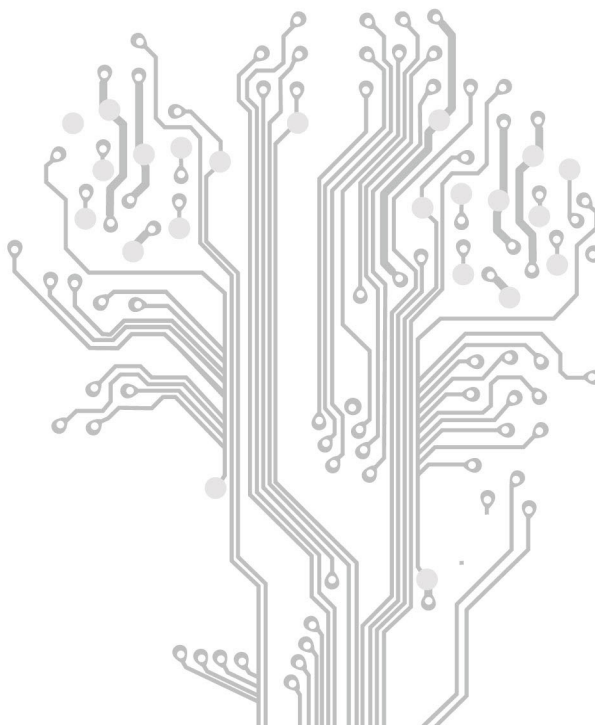
川土微电子选型表-线性HALL电流传感器 Chipanalog Products Selection_Linear Hall Sensor

Part number	Current Sensing Range(A)	Supply voltage(V)	On-resistance (mΩ)	Total Output Error(%)	Non-linearity (%)	Sensitivity(mV /A)	Bandwidth h(kHz)	Propagation Dealy(μs)	Response Time(μs)	Isolation rating (Vrms)	Surge rating (kVpk)	ESD rating HBM/CDM(kV)	Temperature range (°C)	Package
CA-IS23050W	±50	4.5-5.5	0.61	±3	±1	40	120	2	3.7	5000	10	2/0.5	-40~125	SOIC16-WB(W)
CA-IS23025S	±25	4.5-5.5	1	±3	±1	80	120	2	3.7	3750	6	2/0.5	-40~125	SOIC8(S)
CA-IS23030S	±30	4.5-5.5	1	±3	±1	66.67	120	2	3.7	3750	6	2/0.5	-40~125	SOIC8(S)
CA-IS23050S	±50	4.5-5.5	1	±3	±1	40	120	2	3.7	3750	6	2/0.5	-40~125	SOIC8(S)
CA-IS23101WH	±100	4.5-5.5	1	±3.5	±1	20	400	1.2	TBD	5000	10	TBD	-40~125	SOIC10-WB(WH)



PRECISION CHIPANALOG

高精度信号链





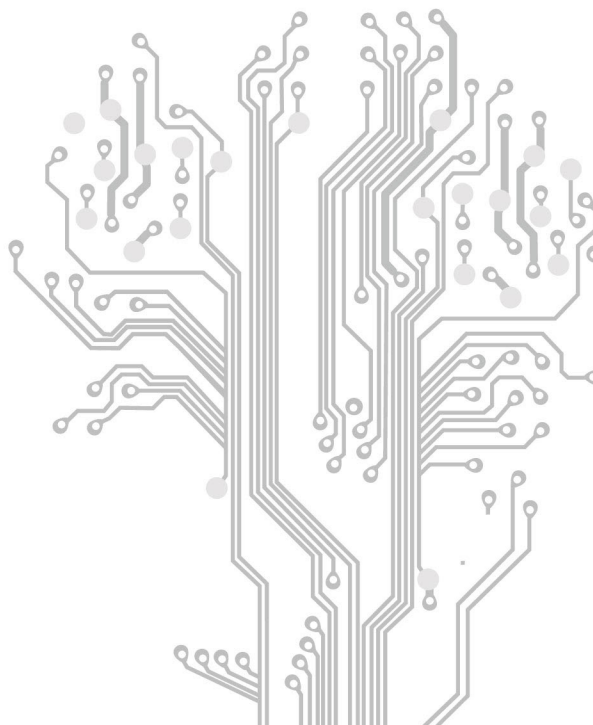
川土微电子选型表-高精度电压基准源 Chipanalog Products Selection_Precision Voltage References

Part number	Features	Output voltage	Temperature drift	Initial accuracy	Quiescent current	Load regulation	Line regulation	0.1~10Hz noise voltage	Package
CA-HP60255	Low-drift voltage reference	2.5 V	1 ppm/°C	0.0005	0.65 mA	14 ppm/mA	2 ppm/V	10 μ Vp-p	SOIC8
CA-HP60415	Low-drift voltage reference	4.096 V	2 ppm/°C	0.0005	0.65 mA	9 ppm/mA	2 ppm/V	16 μ Vp-p	SOIC8
CA-HP60505	Low-drift voltage reference	5 V	2.5 ppm/°C	0.0005	0.65 mA	7 ppm/mA	2 ppm/V	20 μ Vp-p	SOIC8



ISOLATED DRIVER

隔离驱动





川土微电子选型表-单通道光耦兼容型隔离驱动

Chipanalog Products Selection_Single-Channel Optocoupler-Compatible Isolated Drivers

Part Number	Peak source/sink current (A)	Output-side UVLO threshold (V)	Output	Supply voltage output-side(V)	Maximum transient isolation voltage (Vpk)	CMTI (kV/ μ s)	Surge rating (kVpk)	ESD protection HBM/CDM(kV)	Temperature range (°C)	Package
CA-IS3211VBJ	5/6	8	Single Vout Pin	10~30	8000	150	12.8	4/2	-40~125	SOIC6-WB(J)
CA-IS3211VCJ	5/6	12	Single Vout Pin	14~30	8000	150	12.8	4/2	-40~125	SOIC6-WB(J)
CA-IS3211VBG	5/6	8	Single Vout Pin	10~30	8000	150	12.8	4/2	-40~125	SOIC8-WB(G)
CA-IS3211VCG	5/6	12	Single Vout Pin	14~30	8000	150	12.8	4/2	-40~125	SOIC8-WB(G)
CA-IS3211SBG	5/6	8	Split Output	10~30	8000	150	12.8	4/2	-40~125	SOIC8-WB(G)
CA-IS3211SCG	5/6	12	Split Output	14~30	8000	150	12.8	4/2	-40~125	SOIC8-WB(G)
CA-IS3211VBU	5/6	8	Single Vout Pin	10~30	5300	150	8	4/2	-40~125	DUB8 (U)
CA-IS3211VCU	5/6	12	Single Vout Pin	14~30	5300	150	8	4/2	-40~125	DUB8 (U)

川土微电子选型表-超宽体光耦兼容型隔离驱动

Chipanalog Products Selection_Extra-Wide Body Optocoupler-Compatible Isolated Drivers

Part Number	Peak source/sink current (A)	Output-side UVLO threshold (V)	Output	Supply voltage output-side(V)	Maximum transient isolation voltage (Vpk)	CMTI (kV/ μ s)	Surge rating (kVpk)	ESD protection HBM/CDM(kV)	Temperature range (°C)	Package
CA-IS3211SCWG	5/6	12	Split Output	14~30	10600	100	12.8	4/2	-40~125	SOIC8-WWB(WG)



川土微电子选型表-经济型单通道光耦兼容型隔离驱动

Chipanalog Products Selection_Economical Single-Channel Optocoupler-Compatible Isolated Drivers

Part Number	Peak source/sink current (A)	Output-side UVLO threshold (V)	Output	Supply voltage output-side(V)	Maximum transient isolation voltage (Vpk)	CMTI (kV/μs)	Surge rating (kVpk)	ESD protection HBM/CDM(kV)	Temperature range (°C)	Package
CA-IS3211CVCJ	4/5	12	Single Vout Pin	14~30	8000	150	12.8	4/2	-40~125	SOIC6-WB(J)
CA-IS3211CVBJ	4/5	8	Single Vout Pin	14~30	8000	150	12.8	4/2	-40~125	SOIC6-WB(J)
CA-IS3211CVCU	4/5	12	Single Vout Pin	14~30	5300	150	8.125	4/2	-40~125	DUB8(U)

川土微电子选型表-标准双通道隔离驱动器

Chipanalog Products Selection_Dual-channel Standard Isolated Drivers

Part Number	Peak source/sink current (A)	Output-side UVLO threshold (V)	Output	Supply voltage output-side(V)	Maximum transient isolation voltage (Vpk)	CMTI (kV/μs)	Surge rating (kVpk)	ESD protection HBM/CDM(kV)	Temperature range (°C)	Package
CA-IS3221CW	5/6	12	DIS	14~30	8000	150	12.8	4/2	-40~125	SOIC16-WB(W)
CA-IS3221BW	5/6	8	DIS	10~30	8000	150	12.8	4/2	-40~125	SOIC16-WB(W)
CA-IS3222CW	5/6	12	EN	14~30	8000	150	12.8	4/2	-40~125	SOIC16-WB(W)
CA-IS3222BW	5/6	8	EN	10~30	8000	150	12.8	4/2	-40~125	SOIC16-WB(W)
CA-IS3222BK	5/6	8	EN	10~30	8000	150	12.8	4/2	-40~125	SOIC14-WB(W)
CA-IS3222CK	5/6	12	EN	14~30	8000	150	12.8	4/2	-40~125	SOIC14-WB(W)
CA-IS3221AW	5/6	6	DIS	10~30	8000	150	12.8	4/2	-40~125	SOIC16-WB(W)
CA-IS3221AN	5/6	6	DIS	10~30	5300	150	8	4/2	-40~125	SOIC16-NB(N)
CA-IS3221BN	5/6	8	DIS	10~30	5300	150	8	4/2	-40~125	SOIC16-NB(N)
CA-IS3221AA	5/6	6	DIS	8~25	3535	150	4.55	4/2	-40~125	LGA13(A)
CA-IS3221BA	5/6	8	DIS	10~25	3535	150	4.55	4/2	-40~125	LGA13(A)



川土微电子选型表-标准双通道隔离驱动器

Chipanalog Products Selection_Dual-channel Standard Isolated Drivers

Part Number	Peak source/sink current (A)	Output-side UVLO threshold (V)	Output	Supply voltage output-side(V)	Maximum transient isolation voltage (Vpk)	CMTI (kV/ μ s)	Surge rating (kVpk)	ESD protection HBM/CDM(kV)	Temperature range (°C)	Package
CA-IS3221CBW	4/5	8	DIS	10~30	8000	150	12.8	3/2	-40~125	SOIC16-WB(W)
CA-IS3221CBN	4/5	8	DIS	10~30	5300	150	5.3	3/2	-40~125	SOIC16-NB(N)

川土微电子选型表-汽车级标准双通道隔离驱动器

Chipanalog Products Selection_Automotive Dual-channel Standard Isolated Drivers

Part Number	Peak source/sink current (A)	Output-side UVLO threshold (V)	Output	Supply voltage output-side(V)	Maximum transient isolation voltage (Vpk)	CMTI (kV/ μ s)	Surge rating (kVpk)	ESD protection HBM/CDM(kV)	Temperature range (°C)	Package
CA-IS3221CW-Q1	5/6	12	DIS	14~30	8000	150	12.8	4/2	-40~125	SOIC16-WB(W)
CA-IS3221BW-Q1	5/6	8	DIS	10~30	8000	150	12.8	4/2	-40~125	SOIC16-WB(W)
CA-IS3222CW-Q1	5/6	12	EN	14~30	8000	150	12.8	4/2	-40~125	SOIC16-WB(W)
CA-IS3222BW-Q1	5/6	8	EN	10~30	8000	150	12.8	4/2	-40~125	SOIC16-WB(W)
CA-IS3221CK-Q1	5/6	12	DIS	14~30	8000	150	12.8	4/2	-40~125	SOIC14-WB(K)
CA-IS3221BK-Q1	5/6	8	DIS	10~30	8000	150	12.8	4/2	-40~125	SOIC14-WB(K)
CA-IS3222CK-Q1	5/6	12	EN	14~30	8000	150	12.8	4/2	-40~125	SOIC14-WB(K)
CA-IS3222BK-Q1	5/6	8	EN	10~30	8000	150	12.8	4/2	-40~125	SOIC14-WB(K)
CA-IS3221CN-Q1	5/6	12	DIS	14~30	5300	150	8	4/2	-40~125	SOIC16-NB(N)
CA-IS3221BN-Q1	5/6	8	DIS	10~30	5300	150	8	4/2	-40~125	SOIC16-NB(N)
CA-IS3222CN-Q1	5/6	12	EN	14~30	5300	150	8	4/2	-40~125	SOIC16-NB(N)
CA-IS3222BN-Q1	5/6	8	EN	10~30	5300	150	8	4/2	-40~125	SOIC16-NB(N)



川土微电子选型表-单通道增强隔离栅极驱动器

Chipanalog Products Selection_Single-channel Reinforced Isolated Gate Drivers

Part Number	Power switch	Peak source/sink current (A)	DESAT threshold	Soft turn-off current	Dead-time	Internal/external clamp	Maximum transient isolation voltage (Vpk)	CMTI (kV/μs)	Surge rating (kVpk)	ESD protection HBM/CDM(kV)	Temperature range (°C)	Package
CA-IS3215VNW	IGBT	15	9V	400mA	not have	Internal	8000	150	12.8	3/2	-40~125	SOIC16-WB(W)

川土微电子选型表-汽车级单通道增强隔离栅极驱动器

Chipanalog Products Selection_Automotive, Single-channel Reinforced Isolated Gate Drivers

Part Number	Power switch	Peak source/sink current (A)	DESAT threshold	Soft turn-off current	Dead-time	Internal/external clamp	Maximum transient isolation voltage (Vpk)	CMTI (kV/μs)	Surge rating (kVpk)	ESD protection HBM/CDM(kV)	Temperature range (°C)	Package
CA-IS3215ENW-Q1	IGBT	15	9V	400mA	800ns	Internal	8000	150	12.8	3/2	-40~125	SOIC16-WB(W)
CA-IS3215SNW-Q1	IGBT	15	9V	400mA	800ns	Internal	8000	150	12.8	3/2	-40~125	SOIC16-WB(W)
CA-IS3215LNW-Q1	IGBT	15	9V	400mA	800ns	Internal	8000	150	12.8	3/2	-40~125	SOIC16-WB(W)
CA-IS3216SNW-Q1	SIC	15	6V	1A	140ns	Internal	8000	150	12.8	3/2	-40~125	SOIC16-WB(W)
CA-IS3217SNW-Q1	SIC	10	9V	1A	800ns	Internal	8000	150	12.8	3/2	-40~125	SOIC16-WB(W)
CA-IS3217ANW-Q1	SIC	10	9V	1A	800ns	Internal	8000	150	12.8	3/2	-40~125	SOIC16-WB(W)
CA-IS3217LNW-Q1	SIC	10	9V	1A	800ns	Internal	8000	150	12.8	3/2	-40~125	SOIC16-WB(W)



川士微电子选型表-汽车级功能安全隔离栅极驱动器

Chipanalog Products Selection_Functional Safety Reinforced Isolated Drivers

Part Number	Power switch	Peak source/sink current (A)	DESAT threshold	Soft turn-off current	Dead-time	Internal/external clamp	Maximum transient isolation voltage (Vpk)	CMTI (kV/μs)	Surge rating (kVpk)	ESD protection HBM/CDM(kV)	Temperature range (°C)	Package
CA-IS3265AMT-Q1	IGBT	15	9V	400mA	800ns	Internal	8000	150	12.8	3/2	-40~125	MSOW20(MT)
CA-IS3265DMT-Q1	IGBT	15	9V	400mA	800ns	Internal	8000	150	12.8	3/2	-40~125	MSOW20(MT)
CA-IS3266AMT-Q1	SIC	15	6V	1A	140ns	Internal	8000	150	12.8	3/2	-40~125	MSOW20(MT)
CA-IS3266BMT-Q1	SIC	15	6V	1A	140ns	Internal	8000	150	12.8	3/2	-40~125	MSOW20(MT)
CA-IS3266CMT-Q1	SIC	15	6V	1A	140ns	Internal	8000	150	12.8	3/2	-40~125	MSOW20(MT)

川士微电子选型表-单通道CMOS输入型栅极驱动器

Chipanalog Products Selection_Single-Channel CMOS Input Gate Driver

Part number	Power switch	Peak source/sink current (A)	Output-side UVLO threshold (V)	Maximum output driving voltage(V)	Maximum propagation delay (ns)	Internal/external clamp	Maximum transient isolation voltage (Vpk)	CMTI (kV/μs)	Surge rating (kVpk)	ESD protection HBM/CDM(kV)	Temperature range (°C)	Package
CA-IS3212SCS	IGBT/SiC	4/5	12	33	85	No	5300	150	6.5	4/2	-40~125	SOIC8-S(S)
CA-IS3212SBS	IGBT/SiC	4/5	8	33	85	No	5300	150	6.5	4/2	-40~125	SOIC8-S(S)
CA-IS3212MCS	IGBT/SiC	4/5	12	33	85	Internal	5300	150	6.5	4/2	-40~125	SOIC8-S(S)
CA-IS3212VCS	IGBT/SiC	4/5	12	33	85	No	5300	150	6.5	4/2	-40~125	SOIC8-S(S)
CA-IS3212TSCG	IGBT/SiC	4/5	12	33	85	No	8000	150	12.8	3/2	-40~125	SOIC8-WB(G)
CA-IS3212SCG	IGBT/SiC	4/5	12	33	85	No	8000	150	12.8	4/2	-40~125	SOIC8-WB(G)
CA-IS3212MCG	IGBT/SiC	4/5	12	33	85	Internal	8000	150	12.8	4/2	-40~125	SOIC8-WB(G)
CA-IS3212VCG	IGBT/SiC	4/5	12	33	85	No	8000	150	12.8	4/2	-40~125	SOIC8-WB(G)
CA-IS3214MCG	IGBT/SiC	10/10	12.5	33	80	Internal	8000	150	12.8	4/2	-40~125	SOIC8-WB(G)
CA-IS3213MCG	IGBT/SiC	15/15	12	33	130	Internal	8000	150	12.8	3/2	-40~125	SOIC8-WB(G)
CA-IS3213VCG	IGBT/SiC	15/15	12	33	130	No	8000	150	12.8	3/2	-40~125	SOIC8-WB(G)



川土微电子选型表-双通道CMOS输入型栅极驱动器

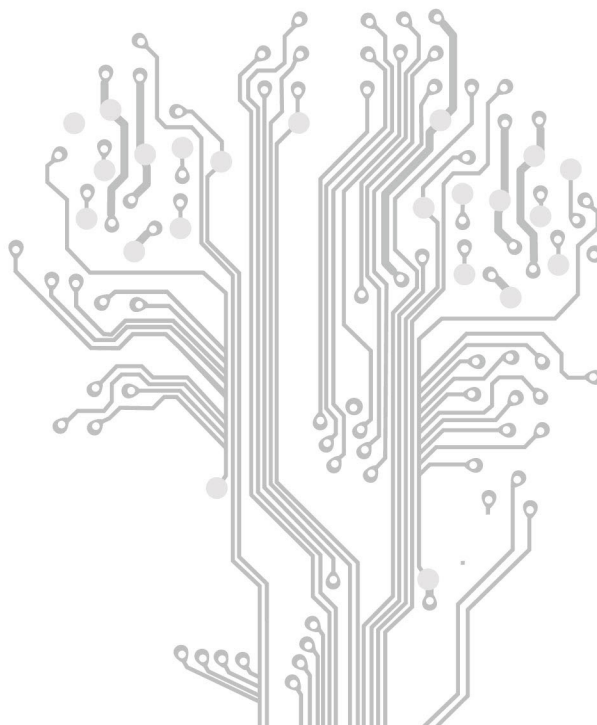
Chipanalog Products Selection_Dual-Channel CMOS Input Gate Driver

Part number	Power switch	Peak source/sink current (A)	Output-side UVLO threshold (V)	Maximum output driving voltage(V)	Maximum propagation delay (ns)	Internal/external clamp	Maximum transient isolation voltage (Vpk)	CMTI (kV/ μ s)	Built-in Diode	ESD protection HBM/CDM(kV)	Temperature range (°C)	Package
CA-IS3223EHS-Q1	Si MOS/IGBT	1.9/2.2	12	20	70	No	800	50	NO	3/2	-40~125	SOIC8-S(S)
CA-IS3223ELS-Q1	Si MOS/IGBT	1.9/2.2	12	20	70	No	800	50	NO	3/2	-40~125	SOIC8-S(S)
CA-IS3223EVS-Q1	Si MOS/IGBT	1.9/2.2	12	20	70	No	800	50	NO	3/2	-40~125	SOIC8-S(S)
CA-IS3223EHS	Si MOS/IGBT	1.9/2.2	12	20	70	No	800	50	NO	3/2	-40~125	SOIC8-S(S)



POWER MANAGEMENT

电源管理





川土微电子选型表-隔离型DC/DC转换器及模组 (μMIC产品) Chipanalog Products Selection_Isolated DC-DC Converters and Modules

Part number	Output power (W)	Operating voltage range (V)	Isolation rating (Vrms)	CMTI (kV/μs)	Surge rating (kVpk)	ESD rating HBM(kV)	ESD rating HBM(kV)	Temperature range (°C)	Package
CA-IS3105W	0.5	4.5-5.5	5000	150	10	3	3	-40~125	SOIC16-WB(W)
CA-IS3115AW	1.5	4.5-5.5	5000	150	12.8	3	3	-40~125	SOIC16-WB(W)
CA-IS3115AW-Q1	1.5	4.5-5.5	5000	150	12.8	3	3	-40~125	SOIC16-WB(W)

川土微电子选型表-集成LDO LIN收发器 (μMIC产品) Chipanalog Products Selection_LIN Transceivers with LDO

Part number	With internal LDO?	Remote wakeup	Data rate (Kbps)	Common mode voltage range (V)	Fault protection (V)	HBM ESD rating other pins (±kV)	HBM ESD rating bus pin (±kV)	Operating voltage range (V)	Logic operating voltage range (V)	Junction temp range (°C)	Package
CA-IF10285S-Q1	Yes	Yes	20	/	-42~42	8	8	5.5-28	/	-40~150	SOIC8(S)
CA-IF10283S-Q1	Yes	Yes	20	/	-42~42	8	8	5.5-28	/	-40~150	SOIC8(S)
CA-IF10285D-Q1	Yes	Yes	20	/	-42~42	8	8	5.5-28	/	-40~150	DFN8(D)
CA-IF10283D-Q1	Yes	Yes	20	/	-42~42	8	8	5.5-28	/	-40~150	DFN8(D)
CA-IF10285AS-Q1	Yes	Yes	20	/	-42~42	8	8	5.5-28	/	-40~150	SOIC8(S)
CA-IF10283AS-Q1	Yes	Yes	20	/	-42~42	8	8	5.5-28	/	-40~150	SOIC8(S)
CA-IF10285AD-Q1	Yes	Yes	20	/	-42~42	8	8	5.5-28	/	-40~150	DFN8(D)
CA-IF10283AD-Q1	Yes	Yes	20	/	-42~42	8	8	5.5-28	/	-40~150	DFN8(D)



川土微电子选型表-集成LDO CAN收发器 (μMIC产品)
Chipanalog Products Selection_CAN Transceivers with LDO

Part number	With internal LDO?	PN wakeup	Data rate (Kbps)	Common mode voltage range (V)	Fault protection (V)	HBM ESD rating other pins (±kV)	HBM ESD rating bus pin (±kV)	Operating voltage range (V)	Logic operating voltage range (V)	Junction temp range (°C)	Package
CA-IF1169FDT-Q1	yes	yes	5000	/	-42~42	2	8	5.5-28	5	-40~150	DFN20(D)
CA-IF1169VFDT-Q1	yes	yes	5000	/	-42~42	2	8	5.5-28	3.3	-40~150	DFN20(D)

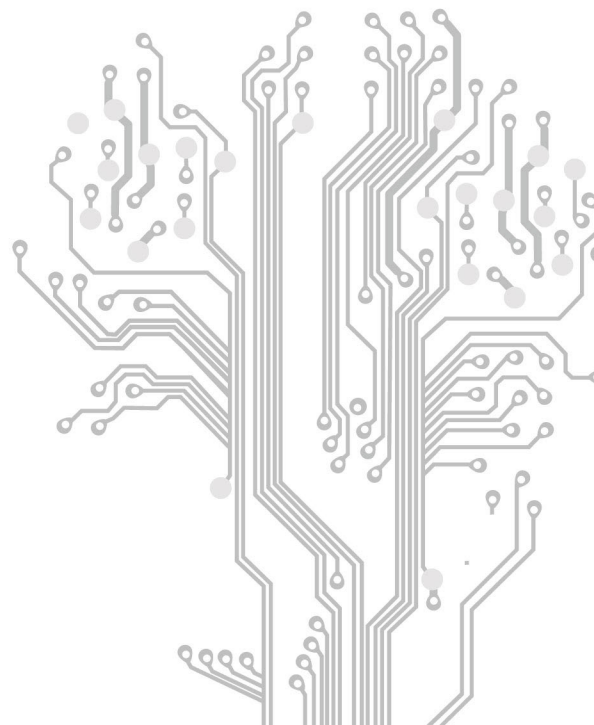


DRIVER

3

SWITCH

驱动与开关





川土微电子选型表-1700V高压隔离开关 (μMIC产品)

Chipanalog Products Selection_1700V High-voltage Isolated Switches

Part number	Off leakage current (μA)	Withstand drain-source voltage (V)	On resistance(Ω)	Maximum input reverse voltage (V)	Maximum transient isolation voltage (Vpk)	CMTI (kV/μs)	Surge rating (kVpk)	ESD rating HBM/CDM(kV)	Temperature range (°C)	Package
CA-IS3417WT	1	1700	50	5.5	8000	150	12.8	3/2	-40~125	SOIC12-WB(WT)

川土微电子选型表-汽车级1700V高压隔离开关 (μMIC产品)

Chipanalog Products Selection_Automotive 1700V High-voltage Isolated Switches

Part number	Off leakage current (μA)	Withstand drain-source voltage (V)	On resistance(Ω)	Maximum input reverse voltage (V)	Maximum transient isolation voltage (Vpk)	CMTI (kV/μs)	Surge rating (kVpk)	ESD rating HBM/CDM(kV)	Temperature range (°C)	Package
CA-IS3417WT-Q1	1	1700	50	5.5	8000	150	12.8	3/2	-40~125	SOIC12-WB(WT)

川土微电子选型表-电机预驱动器

Chipanalog Products Selection_Motor Pre-driver

Part Number	Analog Supply Voltage (V)	Digital Supply Voltage (V)	Sleep Current (μA)	Communication Interface	Drive Current Range (mA)	CSA Common-Mode Input Range (V)	CSA Gain	CSA Input Offset Voltage (mV)	Operating Temperature (°C)	Package
CA-DV87065F-Q1	5~37	3~5.5	1	SPI	0.5~96	-2 ~ PVDD+2	10/20/40/80	±1.5	-40~125	QFN32(F)
CA-DV8706HF-Q1	5~37	3~5.5	1	Hardware	0.5~96	-2 ~ PVDD+2	10/20/40/80	±1.5	-40~125	QFN32(F)

川土微电子选型表-智能功率开关

Chipanalog Products Selection_Intelligent Power Switch

Part Number	VCC Supply Voltage Range (V)	Output Port Withstand Voltage (V)	Single-Channel Sink Current Capability (mA)	ESD Performance HBM / CDM (kV)	Input Control Logic	Operating Temperature (°C)	Package
CA-DV8008N	3~5.5	50	500	4/2	I2C	-40~125	SOIC16-NB (N)



微信公众号



微信视频号



Bilibili



官方网站

  Chipanalog 川土微电子

 联系我们 CONTACT:

中国·上海市青浦区高泾路599号D座4楼 & 5楼

4-5F, Block D, Gaojing Road 599, Qingpu District, Shanghai, 201702, P.R. China

 <http://www.chipanalog.com>

 March 5th, 2026